



M MINKA

JANUARY 2026 LIGHTING COLLECTION





Welcome to Minka's 2026 January Product Launch. We invite you to explore over 350 new lighting products, discover our new collections, and find line extensions of your favorites. At Minka, we are dedicated to bringing you style without sacrifice and performance without question.

JAMIE DORMAN

PRESIDENT
MINKA



SERENE MODERN

Sleek Modernity with Cozy Living, Defined by Gentle Shapes and a Serene Color Palette



FUTURE HERITAGE

Blends Classic Elegance with Modern Comfort & Subtle Luxury



CLASSIC COASTAL

Infuses interiors with a tranquil, seaside ambiance using natural materials and coastal hues



REFINED RUSTIC

Merges Classic Traditional with Modern Comfort, Emphasizing Natural Materials & Rich Colors

TABLE OF CONTENTS

ABERDEEN.....	204	MIRELLE.....	42
AERIS.....	66	MIRETH.....	86
ALTHIRA.....	108	MOLVENE.....	126
ARCLUME.....	154	NARRA.....	28
AURELLAN.....	80	NEBRI.....	60
AVEN.....	130	NOELLEA.....	188
AVENELLE.....	198	NORRIN.....	200
BARWELL.....	162	OLENNE.....	8
BAYRA.....	206	ORBIS.....	140
BEAUDELLE.....	64	ORCHID.....	116
BELLFORGE.....	168	ORSTYN.....	12
BLOOME.....	114	ORTESA.....	158
BRANWYN.....	210	PEARL.....	52
BRIARLANE.....	202	PURELIGHT.....	152
BRIENNE.....	156	RAMUS.....	100
BRISSELLE.....	30	RAVIK.....	190
CALEN.....	212	SANDRELLE.....	74
CAVARA.....	70	SERAPHINE.....	106
CELESTINE.....	48	SEVARA.....	182
CLYNE.....	196	SEVILLE.....	124
COASTLYN.....	26	SIENA.....	160
CORALYN.....	138	SORELLE.....	38
CORDEL.....	32	SORRA.....	102
CORDÓN.....	58	STRATFORD.....	192
CORNWELL.....	164	SWAY.....	54
CORTAN.....	132	SYLARI.....	50
COVEA.....	84	TORVENTO.....	88-92
DALVOR.....	172	TRELLWYN.....	142
DELGADA.....	128	VANTREL.....	62
DORIANNE.....	170	VELIQUE.....	46
DRAXEN.....	184	VELISSE.....	24
EDGEWOOD.....	194	VELLINOR.....	104
ELARIS.....	44	VELUNE.....	78
ELOWEN.....	120	VERLA CREST.....	96-98
ELYRIC.....	72	VESTRA.....	34
ESBELTA.....	174	VIONNE.....	94
FENRIC.....	134	VIRELLA.....	82
FERNWOOD.....	68	WEXMERE.....	122
GLASSARA.....	14	WYNN.....	146
HALORA.....	144	YORKSHIRE.....	180
HALWYND.....	40	ZINNIA.....	178
HIGH RISE.....	56	ZYRA.....	176
HURSTBORNE.....	208		
JAXEN.....	118		
JEZELLE.....	112	COLLECTIONS.....	8-213
KINTREL.....	22	PENDANTS.....	214-220
KIORI.....	110	MINI PENDANTS.....	221
LENORA.....	166	CHANDELIERS.....	222-223
LINTHOR.....	36	LINEAR CHANDELIER.....	224-225
LORENTH.....	186	SEMI FLUSH MOUNTS.....	226-227
LUNARA.....	10	FLUSH MOUNTS.....	228-229
LUNEL.....	76	WALL SCONCES.....	230-231
LUNIVA.....	136	BATH SCONCES.....	232-233
LYNCA.....	150	VANITY.....	234-237
MARCLAIRE.....	16-20	BATH BARS.....	238
MARNEX.....	148	OUTDOOR.....	240-241

COLLECTIONS

Indoor



OLENNE | Pg 8



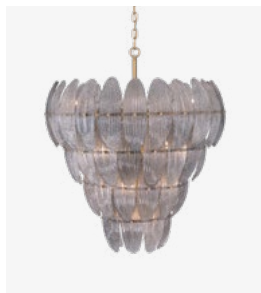
LUNARA | Pg 10



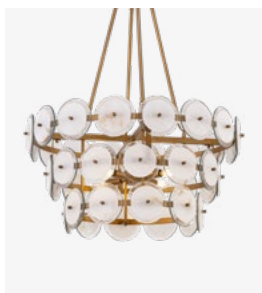
ORSTYN | Pg 12



GLASSARA | Pg 14



MARCLAIRE | Pg 16-20



KINTREL | Pg 22



VELISSE | Pg 24



COASTLYN | Pg 26



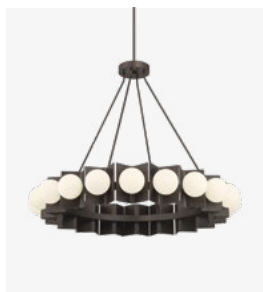
NARRA | Pg 28



BRISSELLE | Pg 30



CORDEL | Pg 32



VESTRA | Pg 34



LINTHOR | Pg 36



SORELLE | Pg 38



HALWYND | Pg 40



MIRELLE | Pg 42



ELARIS | Pg 44



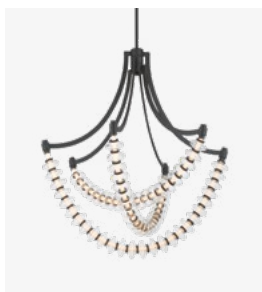
VELIQUE | Pg 46



CELESTINE | Pg 48



SYLARI | Pg 50



PEARL | Pg 52



SWAY | Pg 54



HIGH RISE | Pg 56



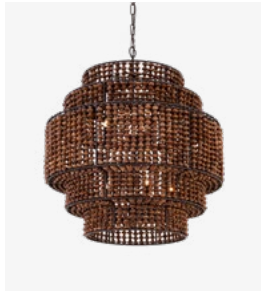
CORDÓN | Pg 58



NEBRI | Pg 60



VANTREL | Pg 62



BEAUDELLE | Pg 64



AERIS | Pg 66



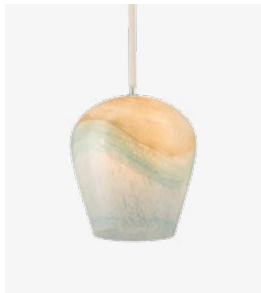
FERNWOOD | Pg 68



CAVARA | Pg 70



ELYRIC | Pg 72



SANDRELLE | Pg 74



LUNEL | Pg 76



VELUNE | Pg 78



AURELLAN | Pg 80



VIRELLA | Pg 82



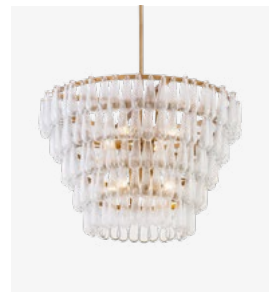
COVEA | Pg 84



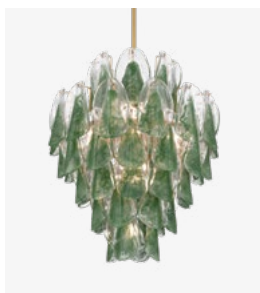
MIRETH | Pg 86



TORVENTO | Pg 88-92



VIONNE | Pg 94



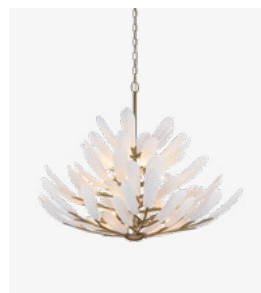
VERLA CREST | Pg 96-98



RAMUS | Pg 100



SORRA | Pg 102



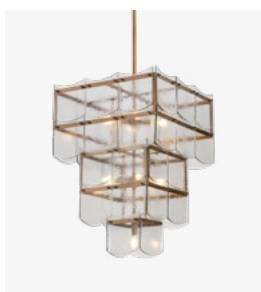
VELLINOR | Pg 104



SERAPHINE | Pg 106



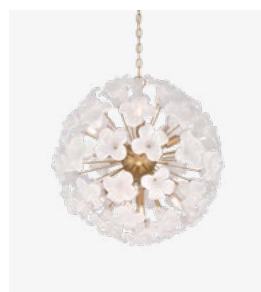
ALTHIRA | Pg 108



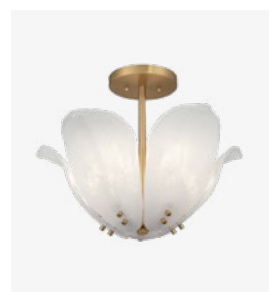
KIORI | Pg 110



JEZELLE | Pg 112



BLOOME | Pg 114



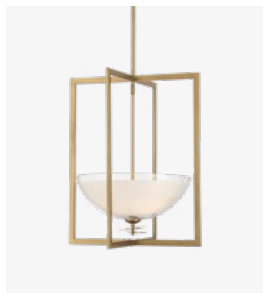
ORCHID | Pg 116

COLLECTIONS

Indoor



JAXEN | Pg 118



ELOWEN | Pg 120



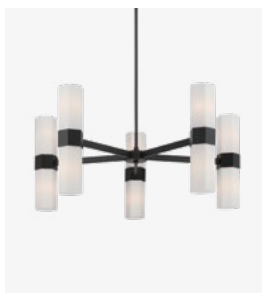
WEXMERE | Pg 122



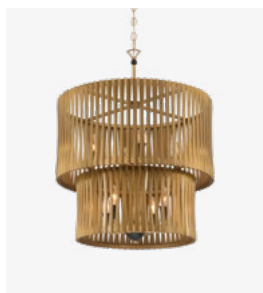
SEVILLE | Pg 124



MOLVENE | Pg 126



DELGADA | Pg 128



AVEN | Pg 130



CORTAN | Pg 132



FENRIC | Pg 134



LUNIVA | Pg 136



CORALYN | Pg 138



ORBIS | Pg 140



TRELLWYN | Pg 142



HALORA | Pg 144



WYNN | Pg 146



MARNEX | Pg 148



LYNCA | Pg 150



PURELIGHT | Pg 152



ARCLUME | Pg 154



BRIENNE | Pg 156



ORTESA | Pg 158



SIENA | Pg 160



BARWELL | Pg 162



CORNWELL | Pg 164



LENORA | Pg 166



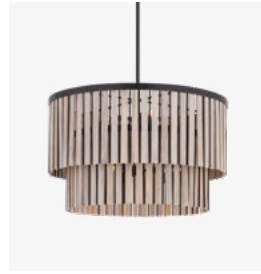
BELLFORGE | Pg 168



DORIANNE | Pg 170



DALVOR | Pg 172



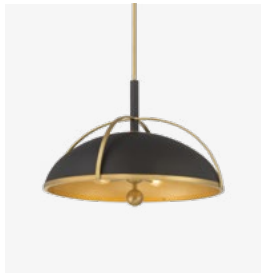
ESBELTA | Pg 174



ZYRA | Pg 176



ZINNIA | Pg 178



YORKSHIRE | Pg 180



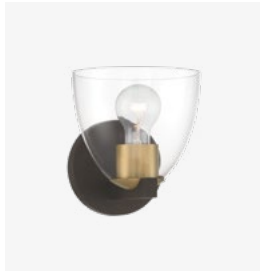
SEVARA | Pg 182



DRAXEN | Pg 184



LORENTH | Pg 186



NOELLEA | Pg 188



RAVIK | Pg 190

Outdoor



STRATFORD | Pg 192



EDGEWOOD | Pg 194



CLYNE | Pg 196



AVENELLE | Pg 198



NORRIN | Pg 200



BRIARLANE | Pg 202



ABERDEEN | Pg 204



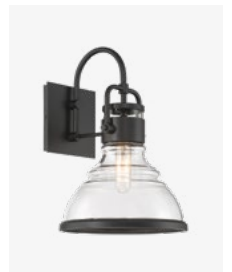
BAYRA | Pg 206



HURSTBORNE | Pg 208



BRANWYN | Pg 210



CALEN | Pg 212



8-LIGHT PENDANT
◀ 10388-876
LEGACY BRASS
& DARK MATTE BLACK
 42" Dia. x 32.25" H
 8-60W E12 Cand. Base
 Dimmable | Damp Rated
 Etched Amber Swirl Glass

Etched amber swirls across glass orbs, casting a warm, organic glow that softens the bold metal framing. The result is a striking balance of Art Deco shapes and contemporary restraint.



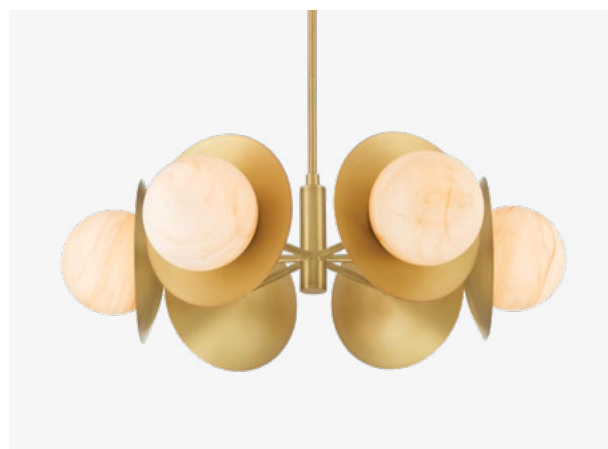
1-LIGHT PENDANT
◀ 10385-732 - *LEGACY BRASS*
 14" Dia. x 21.5" H
 1-60W E26 Med. Base
 Dimmable | Damp Rated
 Etched Amber Swirl Glass

1-LIGHT BATH SCONCE
▼ 10381-732 - *LEGACY BRASS*
 9" W x 9" H x 7.25" Ext.
 1-60W E12 Cand. Base
 Dimmable | Damp Rated
 Etched Amber Swirl Glass



1-LIGHT WALL SCONCE
◀ 10380-732 - *LEGACY BRASS*
 9" W x 18" H x 9.5" Ext.
 1-60W E12 Cand. Base
 Dimmable | Damp Rated
 Etched Amber Swirl Glass

6-LIGHT PENDANT
▼ 10386-732 - *LEGACY BRASS*
 28" Dia. x 9.25" H
 6-60W E12 Cand. Base
 Dimmable | Damp Rated
 Etched Amber Swirl Glass





5-LIGHT LINEAR CHANDELIER
◀ 10387-732 - LEGACY BRASS
64" L x 9" W x 7" H
5-60W E12 Cand. Base
Dimmable | Damp Rated
Etched Amber Swirl Glass

LUNARA



7-LIGHT SEMI-FLUSH MOUNT
▲ 12077-732 - *LEGACY BRASS*
18.5" Dia. x 13.75" H
7-60W E12 Cand. Base
Dimmable | Damp Rated
Opal Glass



19-LIGHT CHANDELIER
◀ 12079-732
LEGACY BRASS
28" Dia. x 20.5" H
19-40W E12 Cand. Base
Dimmable | Damp Rated
Opal Glass

CONVERTIBLE TO
SEMI-FLUSH

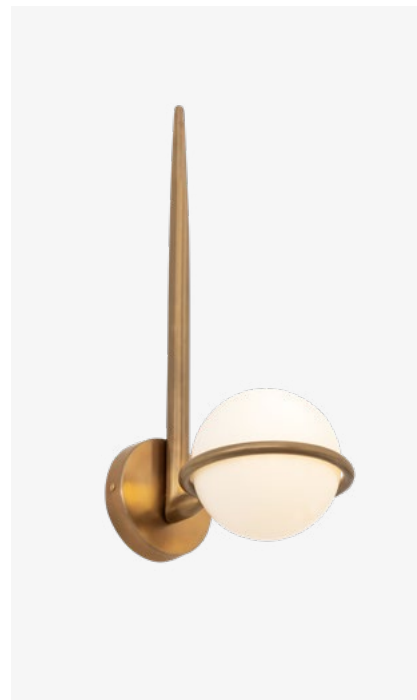
A sculptural burst of frosted glass globes radiates from a central brass core, echoing 1960s space-age design with softened geometry and ambient diffusion for elevated modern interiors.





4-LIGHT CHANDELIER
◀ 12505-732 - LEGACY BRASS
48" Dia. x 14.25" H
4-25W E12 Cand. Base
Dimmable | Damp Rated
Opal Glass

1-LIGHT WALL SCONCE
▼ 12501-732 - LEGACY BRASS
8" W x 22" H x 10.5" Ext.
1-15W E12 Cand. Base
Dimmable | Damp Rated
Opal Glass



A celestial composition for interiors defined by balance and clarity. Opal glass globes figuratively orbit a central axis, blending Art Deco elegance with contemporary minimalism.



2-LIGHT LINEAR CHANDELIER
◀ 12507-732 - LEGACY BRASS
52" L x 8.5" W x 14.25" H
2-25W E12 Cand. Base
Dimmable | Damp Rated
Opal Glass



GLASSARA



10-LIGHT PENDANT

◀ **N3129-732**

LEGACY BRASS

39.75" Dia. x 36.75" H
10-60W E12 Cand. Base
Dimmable | Damp Rated
Clear Twisted Glass

10-LIGHT PENDANT

▼ **N3128-732**

LEGACY BRASS

31.75" Dia. x 36.75" H
10-60W E12 Cand. Base
Dimmable | Damp Rated
Clear Twisted Glass

6-LIGHT PENDANT

▼ **N3126-732**

LEGACY BRASS

23.75" Dia. x 30" H
6-60W E12 Cand. Base
Dimmable | Damp Rated
Clear Twisted Glass



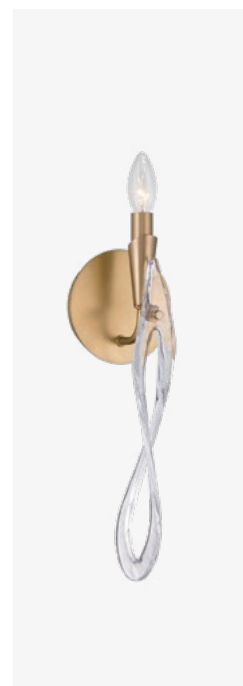
The cascading arrangement evokes movement and airiness, with its subtle variations in handmade glass that refracts light with mesmerizing effect.



8-LIGHT LINEAR CHANDELIER

▲ **N3127-732** - LEGACY BRASS

48" L x 16.5" W x 26" H
8-60W E12 Cand. Base
Dimmable | Damp Rated
Clear Twisted Glass



1-LIGHT WALL SCONCE

▲ **N3121-732** - LEGACY BRASS

5.5" W x 19.75" H x 5.5" Ext.
1-60W E12 Cand. Base
Dimmable | Damp Rated
Clear Twisted Glass



MARCLAIRE

Clear Textured Glass



6-LIGHT PENDANT
◀ N2246-732
LEGACY BRASS
19.75" Dia. x 23.25" H
6-60W E12 Cand. Base
Dimmable | Damp Rated
Clear Textured Glass



The interplay of curvature and textured sparkling finishes transforms organic forms into luminous expressions.



11-LIGHT PENDANT
◀ N2248-732
LEGACY BRASS
26.5" Dia. x 27.75" H
11-60W E12 Cand. Base
Dimmable | Damp Rated
Clear Textured Glass

15-LIGHT PENDANT
▼ N2249-732
LEGACY BRASS
32.75" Dia. x 36.5" H
15-60W E12 Cand. Base
Dimmable | Damp Rated
Clear Textured Glass





1-LIGHT WALL SCONCE
◀ N2241-732
LEGACY BRASS
9.75" W x 11.5" H x 4.75" Ext.
1-60W E12 Cand. Base
Dimmable | Damp Rated
Clear Textured Glass

MARCLAIRE

Brown Textured Glass



6-LIGHT PENDANT
◀ N2246-BR-732
LEGACY BRASS
19.75" Dia. x 23.25" H
6-60W E12 Cand. Base
Dimmable | Damp Rated
Brown Textured Glass



The interplay of curvature and textured sparkling finishes transforms organic forms into luminous expressions.



11-LIGHT PENDANT
◀ N2248-BR-732
LEGACY BRASS
26.5" Dia. x 27.75" H
11-60W E12 Cand. Base
Dimmable | Damp Rated
Brown Textured Glass



15-LIGHT PENDANT
▼ N2249-BR-732
LEGACY BRASS
32.75" Dia. x 36.5" H
15-60W E12 Cand. Base
Dimmable | Damp Rated
Brown Textured Glass





1-LIGHT WALL SCONCE
◀ N2241-BR-732
LEGACY BRASS
9.75"W x 11.5"H x 4.75" Ext.
1-60W E12 Cand. Base
Dimmable | Damp Rated
Brown Textured Glass

MARCLAIRE

Grey Textured Glass



6-LIGHT PENDANT
◀ N2246-GR-732
LEGACY BRASS
19.75" Dia. x 23.25" H
6-60W E12 Cand. Base
Dimmable | Damp Rated
Grey Textured Glass



The interplay of curvature and textured sparkling finishes transforms organic forms into luminous expressions.



11-LIGHT PENDANT
◀ N2248-GR-732
LEGACY BRASS
26.5" Dia. x 27.75" H
11-60W E12 Cand. Base
Dimmable | Damp Rated
Grey Textured Glass

15-LIGHT PENDANT
▼ N2249-GR-732
LEGACY BRASS
32.75" Dia. x 36.5" H
15-60W E12 Cand. Base
Dimmable | Damp Rated
Grey Textured Glass





1-LIGHT WALL SCONCE
◀ N2241-GR-732
LEGACY BRASS
9.75" W x 11.5" H x 4.75" Ext.
1-60W E12 Cand. Base
Dimmable | Damp Rated
Grey Textured Glass

KINTREL



6-LIGHT PENDANT

◀ 12855-732

LEGACY BRASS

30" Dia. x 32" H
6-60W E12 Cand. Base
Dimmable | Damp Rated
Clear Glass & Alabaster

4-LIGHT PENDANT

▼ 12854-732

LEGACY BRASS

28" Dia. x 34" H
4-60W E12 Cand. Base
Dimmable | Damp Rated
Clear Glass & Alabaster



Layered alabaster and glass discs form a sculptural chandelier that plays with light and shadow, suspended in tiers that evoke abstract geometry and mid-century sophistication.



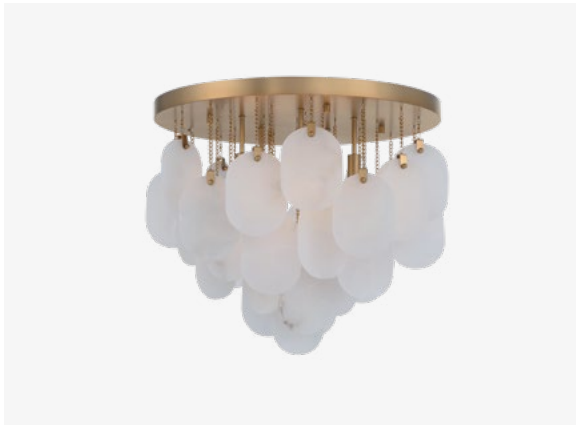
6-LIGHT PENDANT

◀ 12856-732

LEGACY BRASS

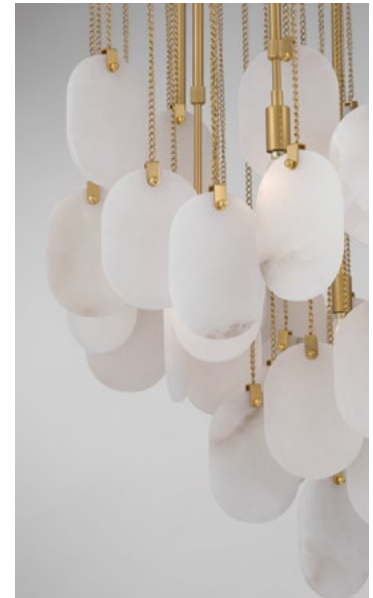
36" Dia. x 34" H
6-60W E12 Cand. Base
Dimmable | Damp Rated
Clear Glass & Alabaster





5-LIGHT FLUSH MOUNT
◀ **N3675-732** - *LEGACY BRASS*
23.75" Dia. x 19.75" H
5-60W E12 Cand. Base
Dimmable | Damp Rated
Alabaster

Sculptural, luminous, and indulgently tactile. Evoking the elegance of jewelry in motion, cascading alabaster discs hang from beautiful brass chains in a tiered display of light and glamour.



6-LIGHT PENDANT
◀ **N3676-732** - *LEGACY BRASS*
27.5" Dia. x 7" H
6-60W E12 Cand. Base
Dimmable | Damp Rated
Alabaster



8-LIGHT PENDANT
▼ **N3678-732** - *LEGACY BRASS*
35.5" Dia. x 7" H
8-60W E12 Cand. Base
Dimmable | Damp Rated
Alabaster





COASTLYN

Extension



9-LIGHT PENDANT

◀ **N1829-732**
LEGACY BRASS

36" Dia. x 47.25" H
9-60W E12 Cand. Base
Dimmable | Damp Rated
White Ceramic

7-LIGHT PENDANT

▼ **N1827-732**
LEGACY BRASS

28" Dia. x 39.5" H
7-60W E12 Cand. Base
Dimmable | Damp Rated
White Ceramic



Just as the impatiens flower thrives in shaded gardens, the Coastlyn blooms with light, its backlit ceramic petals forming a lush, radiant display that captures nature's quiet brilliance.



3-LIGHT SEMI-FLUSH MOUNT

▲ **N1823-732** - LEGACY BRASS

22" Dia. x 12" H
3-60W E12 Cand. Base
Dimmable | Damp Rated
White Ceramic



NARRA



5-LIGHT CHANDELIER
◀ **2525-732** - *LEGACY BRASS*
48" Dia. x 24.5" H
5-60W E12 Cand. Base
Dimmable | Damp Rated
White Bubble Glass

1-LIGHT PENDANT
▼ **2526-732** - *LEGACY BRASS*
12" Dia. x 17.75" H
1-100W E12 Cand. Base
Dimmable | Damp Rated
White Bubble Glass

Narra lighting embraces playful geometry and tonal contrast. Frosted globes and squared brass evoke mid-century optimism, while clean lines and modular forms complement contemporary spaces with design-forward sensibility.





BRISSELLE



LED LINEAR CHANDELIER
◀ N2377-732-L
LEGACY BRASS
 47.25" L x 5.75" W x 10" H
 3W LED | 3000K | 92 CRI
 Dimmable | Damp Rated
 Clear Textured Glass

LED PENDANT
▼ N2379-732-L
LEGACY BRASS
 24" Dia. x 10" H
 3W LED | 3000K | 92 CRI
 Dimmable | Damp Rated
 Clear Textured Glass

Textured glass discs, reminiscent of dew drops or molten crystal caught mid-pour, are hand-formed to refract light in soft, organic patterns, suspended in cascading tiers from sleek brass mounts.



LED PENDANT
▲ N2373-732-L
LEGACY BRASS
 10" Dia. x 10" H
 3W LED | 3000K | 92 CRI
 Dimmable | Damp Rated
 Clear Textured Glass





CORDEL



LED MINI PENDANT

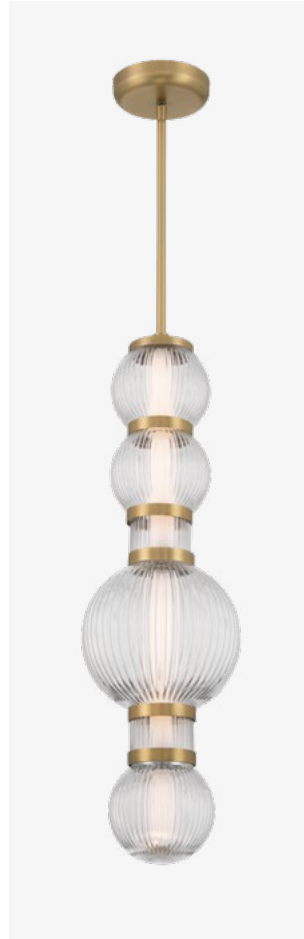
- ◀ 15035-732-L - LEGACY BRASS
- 15035-899-L - DARK MATTE BLACK

9.5" Dia. x 25.5" H
 30W LED | 3000K | 90 CRI
 Dimmable | Damp Rated
 Clear Ribbed Glass

LED MINI PENDANT

- 15036-732-L - LEGACY BRASS
- ▼ 15036-899-L - DARK MATTE BLACK

6.5" Dia. x 18" H
 20W LED | 3000K | 90 CRI
 Dimmable | Damp Rated
 Clear Ribbed Glass



LED MINI PENDANT

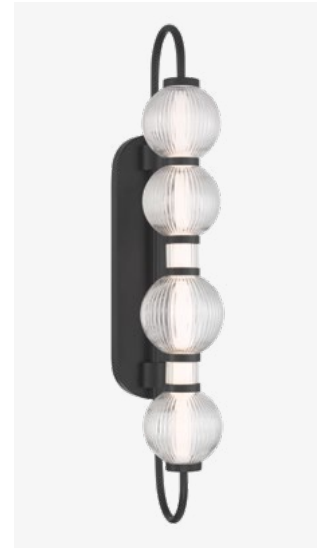
- ◀ 15030-732-L - LEGACY BRASS
- 15030-899-L - DARK MATTE BLACK

8" Dia. x 30" H
 40W LED | 3000K | 90 CRI
 Dimmable | Damp Rated
 Clear Ribbed Glass

LED WALL SCONCE

- 15032-732-L - LEGACY BRASS
- ▼ 15032-899-L - DARK MATTE BLACK

5.25" W x 30.25" H x 9.25" Ext.
 40W LED | 3000K | 90 CRI
 Dimmable | Damp Rated
 Clear Ribbed Glass



Ribbed glass globes—arranged like Venetian glass beads, seemingly float along a taut cord, forgoing traditional bulbs in favor of beam lighting that evokes the curated glow of a contemporary gallery.



LED LINEAR CHANDELIER

- 15037-732-L - LEGACY BRASS
- ◀ 15037-899-L - DARK MATTE BLACK

50.25" L x 8" W x 8" H
 55W LED | 3000K | 90 CRI
 Dimmable | Damp Rated
 Clear Ribbed Glass





LED PENDANT
◀ 10419-860-L
DARK BRONZE
37.5" Dia. x 30" H
50W LED | 3000K | 90 CRI
Dimmable | Damp Rated
Etched Opal Glass



LED WALL SCONCE
◀ 10413-860-L - DARK BRONZE
5" W x 25.25" H x 7.5" Ext.
9W LED | 3000K | 90 CRI
Dimmable | Damp Rated
Etched Opal Glass

LED PENDANT
▼ 10416-860-L - DARK BRONZE
10.5" Dia. x 16" H
12W LED | 3000K | 90 CRI
Dimmable | Damp Rated
Etched Opal Glass



This streamlined take on Hollywood Regency glam draws inspiration from vintage cinema marquees—etched opal glass diffuses gentle light in a dynamic, sculptural display.



LED LINEAR CHANDELIER
◀ 10417-860-L
DARK BRONZE
54" L x 5" W x 5.25" H
15W LED | 3000K | 90 CRI
Dimmable | Damp Rated
Etched Opal Glass





LED LINEAR CHANDELIER

◀ **2555-855-L**
*LEGACY BRASS
& DARK BRONZE*

64" L x 4" W x 4" H
50W LED | 3000K | 90 CRI
Dimmable | Damp Rated
Opal Glass

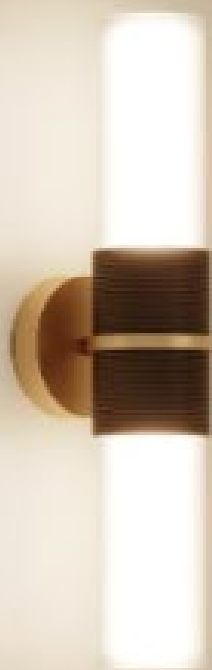
2-LIGHT WALL SCONCE

▼ **2552-855**
*LEGACY BRASS
& DARK BRONZE*

5" W x 22.5" H x 5.75" Ext.
2-60W E12 Cand. Base
Dimmable | Damp Rated
Opal Glass

This linear light pairs opal glass in a balanced composition. Its elongated form evokes gallery lighting, perfect for contemporary interiors with directional intent.





SORELLE



LED LINEAR CHANDELIER

▲ 2506-732-L - *LEGACY BRASS*

▶ 2506-860-L - *DARK BRONZE*

58" L x 4.25" W x 5" H

55W LED | 3000K | 90 CRI

Dimmable | Damp Rated

Opal Glass



Minimalist in form, this dual-cylinder chandelier floats on slender cables. Its composition nods to art gallery sophistication, while the matte white finish warms space with soft light diffusion.



HALWYND



LED BATH SCONCE
◀ **2031-732-L** - *LEGACY BRASS*
7.25" W x 5.75" H x 8.75" Ext.
3W LED | 3000K | 90 CRI
Dimmable | Damp Rated
Clear Glass & Cement

LED VANITY
▼ **2033-732-L** - *LEGACY BRASS*
25.25" W x 5.75" H x 8.75" Ext.
9W LED | 3000K | 90 CRI
Dimmable | Damp Rated
Clear Glass & Cement



Champagne coupe-inspired handmade glass with a textured cement layer creates an optimistic statement in Brutalist elegance.



CONVERTIBLE TO
SEMI-FLUSH

LED PENDANT
▲ **2036-732-L** - *LEGACY BRASS*
15" Dia. x 8.75" H
12W LED | 3000K | 90 CRI
Dimmable | Damp Rated
Clear Glass & Cement



MIRELLE



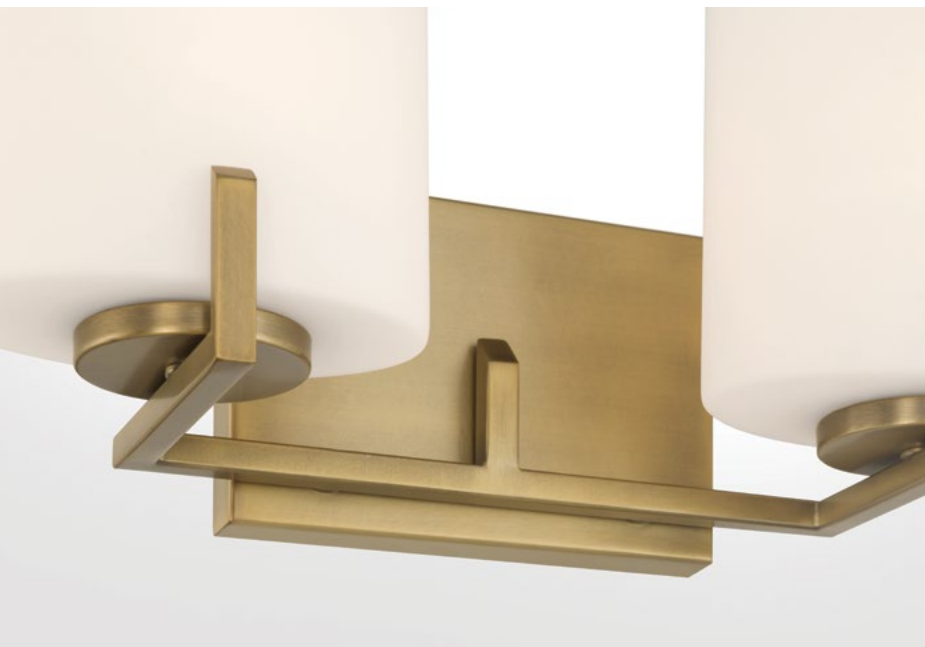
1-LIGHT BATH SCENCE
12431-84 - BRUSHED NICKEL
◀ 12431-732 - LEGACY BRASS
12431-899 - DARK MATTE BLACK
6" W x 7.5" H x 6" Ext.
1-60W E26 Med. Base
Dimmable | Damp Rated
Etched Opal Glass



2-LIGHT VANITY
12432-84 - BRUSHED NICKEL
12432-732 - LEGACY BRASS
▲ 12432-899 - DARK MATTE BLACK
16" W x 7.5" H x 6" Ext.
2-60W E26 Med. Base
Dimmable | Damp Rated
Etched Opal Glass



3-LIGHT VANITY
◀ 12433-84 - BRUSHED NICKEL
12433-732 - LEGACY BRASS
12433-899 - DARK MATTE BLACK
25" W x 7.5" H x 6" Ext.
3-60W E26 Med. Base
Dimmable | Damp Rated
Etched Opal Glass



Frosted glass shields evoke the curve of wind-filled sails, offering a minimalistic coastal aesthetic defined by soft diffusion and clean lines.



ELARIS



1-LIGHT PENDANT
◀ 19414-84 - BRUSHED NICKEL
▼ 19414-732 - LEGACY BRASS
12.5" Dia. x 10.5" H
1-60W E26 Med. Base
Dimmable | Damp Rated
Clear Glass



1-LIGHT PENDANT
▼ 19416-84 - BRUSHED NICKEL
◀ 19416-732 - LEGACY BRASS
12.5" Dia. x 10.5" H
1-60W E26 Med. Base
Dimmable | Damp Rated
Green Ombre Glass



Airy and elemental, the Elaris features an exposed bulb to unite industrial utility with modern refinement—casting a warm, sculptural glow that complements contemporary interiors.



1-LIGHT PENDANT
◀ 19415-84 - BRUSHED NICKEL
▲ 19415-732 - LEGACY BRASS
12.5" Dia. x 10.5" H
1-60W E26 Med. Base
Dimmable | Damp Rated
Brown Bubble Glass



VELIQUE



1-LIGHT PENDANT

◀ 19615-732

LEGACY BRASS
& GREEN GLASS

▼ 19615-899

DARK MATTE BLACK
& CLEAR GLASS

11" Dia. x 11.25" H

1-60W E26 Med. Base
Dimmable | Damp Rated



Layered glass cylinders surround a central bulb, with the inner shade revealing a soft sea glass patina. The effect is tonal and atmospheric—balancing sculptural clarity with coastal character.





CELESTINE

This pendant evokes a sense of ceremonial grace; petal-like linen panels curve outward in quiet symmetry, while a tassel anchors the form with softness and sculptural poise.



3-LIGHT PENDANT

▲ 19875-732

LEGACY BRASS

30" Dia. x 20" H

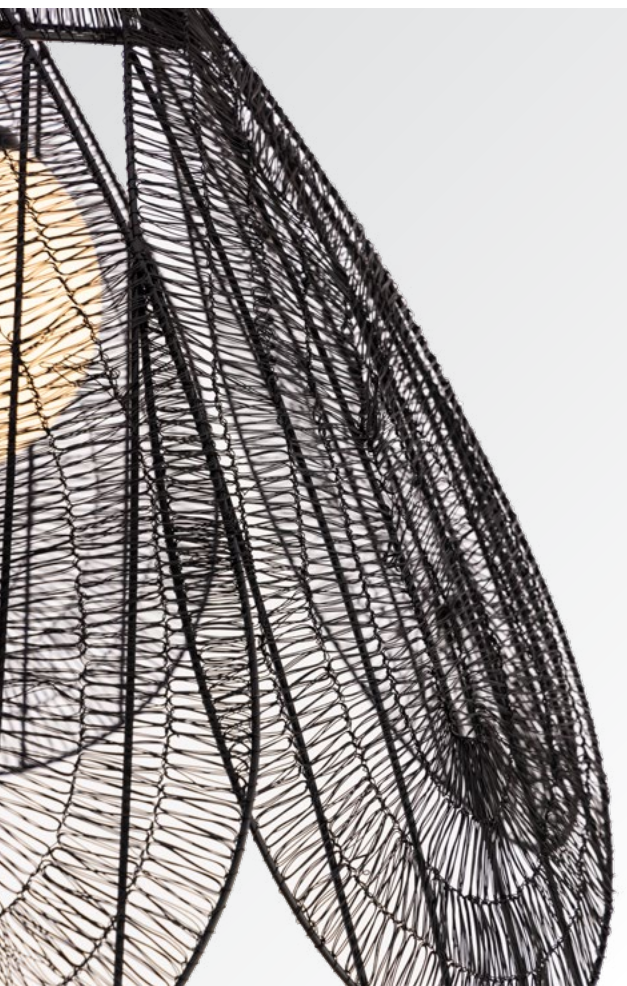
3-60W E12 Cand. Base

Dimmable | Damp Rated

Off White Linen



A wire mesh shade unfolds like black dahlia petals casting intricate shadows with its opal glass globe. The tension between organic shape and metal is ideal for interiors that embrace movement and mood.



1-LIGHT PENDANT
▲ 19986-899
DARK MATTE BLACK
30" Dia. x 24" H
1-40W E26 Med. Base
Dimmable | Damp Rated
Opal Glass



PEARL

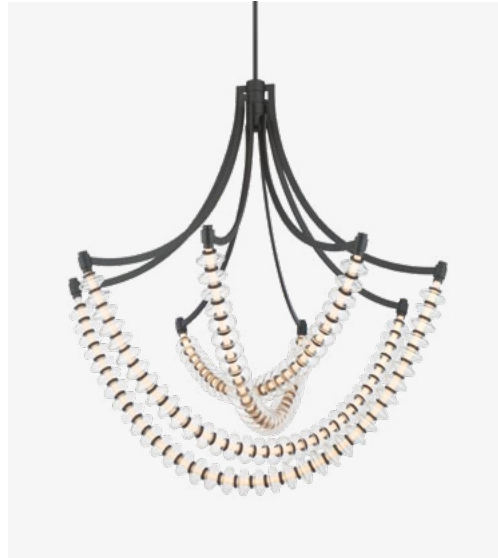
Extension



LED CHANDELIER

◀ **5646-899-L**
DARK MATTE BLACK

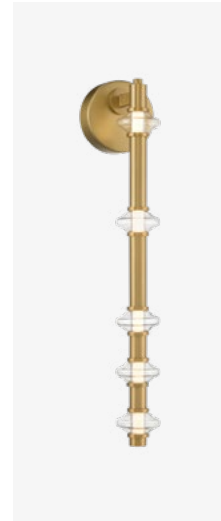
29.25" Dia. x 31" H
26W LED | 3000K | 90 CRI
Dimmable | Damp Rated
Clear Glass



LED CHANDELIER

▼ **5647-899-L**
DARK MATTE BLACK

39.25" Dia. x 40.75" H
48W LED | 3000K | 90 CRI
Dimmable | Damp Rated
Clear Glass

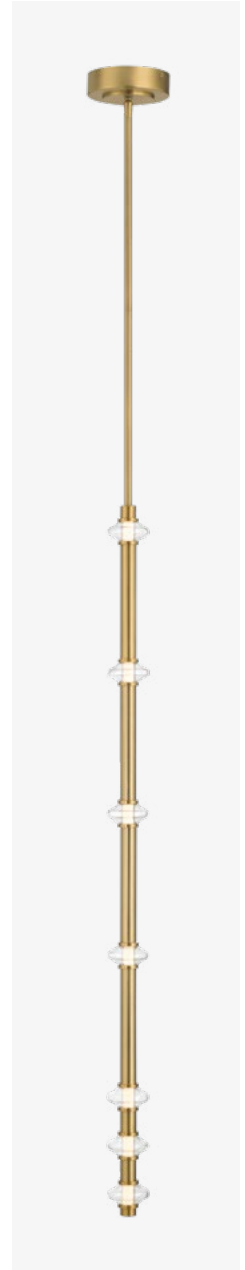


LED WALL SCONCE

▲ **5640-732-L**
LEGACY BRASS

5640-899-L
DARK MATTE BLACK

4.5" W x 21.75" H x 5" Ext.
6W LED | 3000K | 90 CRI
Dimmable | Damp Rated
Clear Glass



LED MINI PENDANT

▲ **5649-732-L**
LEGACY BRASS

5649-899-L
DARK MATTE BLACK

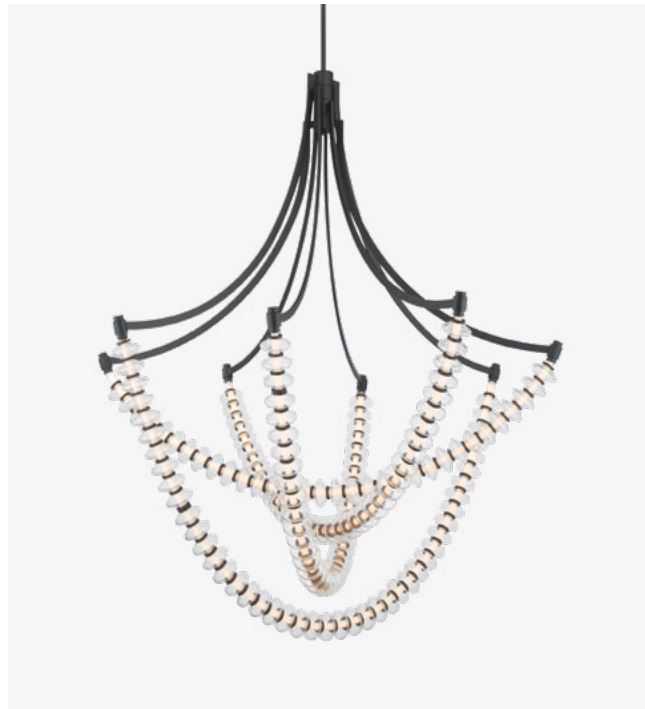
2.5" Dia. x 44" H
8W LED | 3000K | 90 CRI
Dimmable | Damp Rated
Clear Glass

LED CHANDELIER

◀ **5648-899-L**
DARK MATTE BLACK

49.25" Dia. x 50.75" H
57W LED | 3000K | 90 CRI
Dimmable | Damp Rated
Clear Glass

The industrial aesthetic is reimagined through draping blown-glass tubes, inspired by pearl strands to cast a diamond-like brilliance. The result composition dresses any room with artful expression.





LED VANITY

◀ 5642-732-L

LEGACY BRASS

5642-899-L

DARK MATTE BLACK

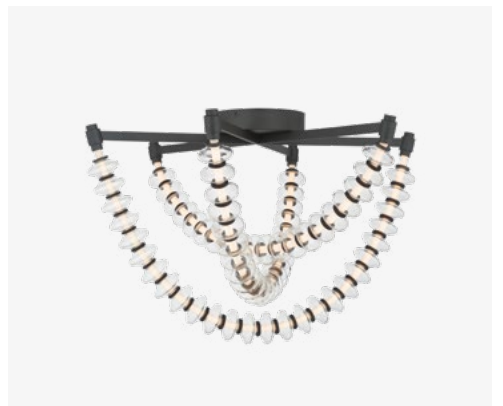
36" W x 9.75" H x 7" Ext.
16W LED | 3000K | 90 CRI
Dimmable | Damp Rated
Clear Glass

LED FLUSH MOUNT

▶ 5645-899-L

DARK MATTE BLACK

28" Dia. x 17.5" H
26W LED | 3000K | 90 CRI
Dimmable | Damp Rated
Clear Glass



SWAY

Extension



3-LIGHT FLUSH MOUNT

◀ 18766-860

DARK BRONZE

16" Dia. x 6.25" H

3-60W E26 Med. Base

Dimmable | Damp Rated
Alabaster

Designed for discerning interiors, a picturesque pairing of dark bronze and alabaster elevates transitional and contemporary spaces alike with an ocean-inspired wave.





HIGH RISE

Extension



LED BATH BAR

2921-732-L

LEGACY BRASS

◀ **2921-899-L**

DARK MATTE BLACK

8.25" W x 5.5" H x 4" Ext.

14W LED | 3000K | 90 CRI

Dimmable | Damp Rated

White Glass

ADA Compliant

LED BATH BAR

◀ **2922-732-L**

LEGACY BRASS

2922-899-L

DARK MATTE BLACK

24.25" W x 5.5" H x 4" Ext.

37W LED | 3000K | 90 CRI

Dimmable | Damp Rated

White Glass

ADA Compliant

LED BATH BAR

2923-732-L

LEGACY BRASS

◀ **2923-899-L**

DARK MATTE BLACK

30" W x 5.5" H x 4" Ext.

44W LED | 3000K | 90 CRI

Dimmable | Damp Rated

White Glass

ADA Compliant



Minimalist and modern, this frosted glass vanity fixture recalls luxury spa-inspired interiors. Rectilinear shades and metal brackets offer clean-lined symmetry for refined bath or hallway lighting.



CORDÓN



4-LIGHT PENDANT
◀ **16066-732** - *LEGACY BRASS*
40" Dia. x 15.75" H
4-60W E26 Med. Base
Dimmable | Damp Rated
White Ceramic & Paper Rope



1-LIGHT MINI PENDANT
▲ **16065-732** - *LEGACY BRASS*
10" Dia. x 9" H
1-60W E26 Med. Base
Dimmable | Damp Rated
White Ceramic & Paper Rope

1-LIGHT WALL SCONCE
▼ **16061-732** - *LEGACY BRASS*
7.5" W x 91" H x 10.75" Ext.
1-60W E26 Med. Base
Dimmable | Damp Rated
White Ceramic & Paper Rope



Twisted macramé cords suspend dome shades with artisanal ease—blending coastal texture and warm brass for a relaxed yet refined statement in layered, bohemian interiors.



3-LIGHT LINEAR CHANDELIER
◀ **16067-732** - *LEGACY BRASS*
65" L x 10" W x 20.75" H
3-60W E26 Med. Base
Dimmable | Damp Rated
White Ceramic & Paper Rope

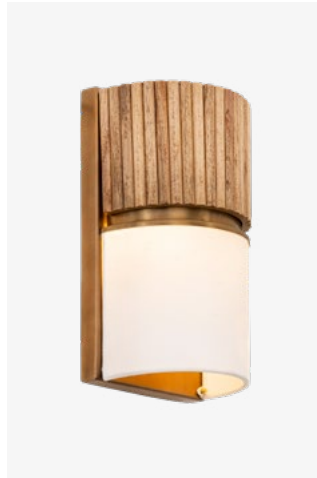




3-LIGHT PENDANT
 ◀ **12056-732** - LEGACY BRASS
 15" Dia. x 7" H
 3-60W E26 Med. Base
 Dimmable | Damp Rated
 Natural Wood & White Linen



3-LIGHT SEMI-FLUSH MOUNT
 ▼ **12054-732** - LEGACY BRASS
 18" Dia. x 10.5" H
 3-60W E26 Med. Base
 Dimmable | Damp Rated
 Natural Wood & White Linen



2-LIGHT WALL SCONCE
 ◀ **12052-732** - LEGACY BRASS
 6" W x 14.5" H x 7" Ext.
 2-60W E26 Med. Base
 Dimmable | Damp Rated
 Natural Wood & White Linen



A nod to Scandinavian design sensibility, this striking display balances warmth and simplicity through the contrast of natural materials: fluted wood, linen fabric, and a touch of brass.



5-LIGHT LINEAR CHANDELIER
 ◀ **12055-732** - LEGACY BRASS
 42" L x 10" W x 10.25" H
 5-60W E26 Med. Base
 Dimmable | Damp Rated
 Natural Wood & White Linen



VANTREL



5-LIGHT CHANDELIER
◀ **14265-732** - *LEGACY BRASS*
26.5" Dia. x 20" H
5-60W E12 Cand. Base
Dimmable
Etched Opal Glass

1-LIGHT WALL SCONCE
▼ **14261-732** - *LEGACY BRASS*
5" W x 13.5" H x 8.75" Ext.
1-60W E12 Cand. Base
Dimmable
Etched Opal Glass



The interplay of brass, etched opal glass, and rope—rendered in symmetrical, clean-lined form—evokes a curated tension: part mid-century modern, part coastal.



8-LIGHT CHANDELIER
◀ **14266-732** - *LEGACY BRASS*
36" Dia. x 27.25" H
8-60W E12 Cand. Base
Dimmable
Etched Opal Glass



BEAUDELLE



4-LIGHT PENDANT

◀ 12954-860 - *DARK BRONZE*

26" Dia. x 12" H
4-40W E12 Cand. Base
Dimmable | Dry Rated
Dark Brown Wooden Beads

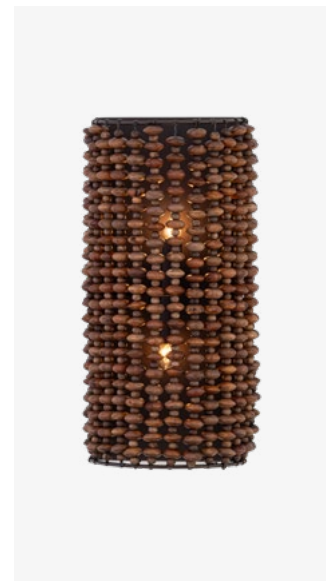
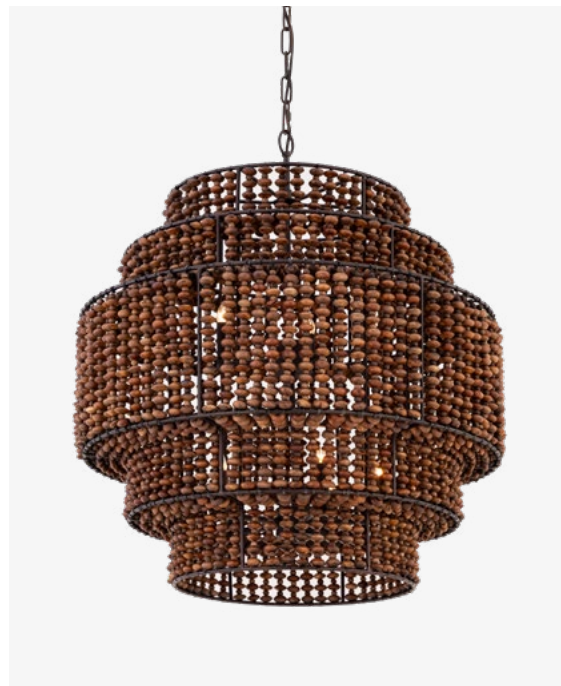
5-LIGHT PENDANT

▼ 12955-860 - *DARK BRONZE*

30" Dia. x 22" H
5-40W E12 Cand. Base
Dimmable | Dry Rated
Dark Brown Wooden Beads



The Beaudelle embodies a rustic-luxe aesthetic—layered tiers of dark wood beads create a sculptural lantern form that feels both antique and architectural, with warm, ambient light filtering through organic texture.



2-LIGHT WALL SCONCE

▲ 12952-860 - *DARK BRONZE*

8" W x 18" H x 6.25" Ext.
2-40W E12 Cand. Base
Dimmable | Dry Rated
Dark Brown Wooden Beads

9-LIGHT PENDANT

◀ 12959-860 - *DARK BRONZE*

30" Dia. x 30" H
9-25W E12 Cand. Base
Dimmable | Dry Rated
Dark Brown Wooden Beads





A blend of tropical texture and nautical shape casts a relaxed mood and approachable elegance to modern spaces that favor coastal touches.





FERNWOOD

Rooted in 1970s coastal modernism, this woven dome pendant blends organic texture with architectural scale, casting dappled light through handwoven fibers.



1-LIGHT PENDANT
▲ 19895-732 - *LEGACY BRASS*
36" Dia. x 22" H
1-100W E26 Med. Base
Dimmable | Dry Rated
Rattan



Ivory wood beads drape across an asymmetric wire frame, creating a pendant that feels both organic and intentional, casting playful shadows with coastal ease.



1-LIGHT PENDANT

▲ 19935-732

LEGACY BRASS

24" Dia. x 21" H

1-100W E26 Med. Base

Dimmable | Dry Rated

Ivory Wooden Beads



ELYRIC



1-LIGHT MINI PENDANT
◀ 15565-732 - LEGACY BRASS
9.75" Dia. x 9.75" H
1-60W E26 Med. Base
Dimmable | Damp Rated
Clear Seeded Glass & Paper Rope

1-LIGHT PENDANT
▼ 15585-732 - LEGACY BRASS
13.25" Dia. x 14.75" H
1-60W E26 Med. Base
Dimmable | Damp Rated
Clear Seeded Glass & Paper Rope



Macramé rope and seeded glass unite bohemian texture with sculptural glam. The hand-knotted suspension adds artisanal warmth, while the glass surface catches and scatters sparkles of light.



SANDRELLE

Ombre blue glass fades from mineral depth to airy translucence, echoing geological strata. Its rounded form and suspended silhouette evoke quiet drama in curated, light-conscious interiors.



1-LIGHT PENDANT
▲ 15575-613 - *POLISHED NICKEL*
13.25" Dia. x 14.75" H
1-60W E26 Med. Base
Dimmable | Damp Rated
Blue Hue Glass & Cotton Rope



LUNEL

Woven with textured linen and shaped like a softened dome, this pendant channels coastal ease—casting a warm, diffused glow that feels both grounded and effortlessly serene.



T-LIGHT PENDANT
▲ 19955-860 - *DARK BRONZE*
24" Dia. x 18.5" H
1-100W E26 Med. Base
Dimmable | Damp Rated
Textured Linen



VELUNE



Textured linen and frayed seams give voluminous shades an earthy, handcrafted appeal, evoking coastal relaxation and the sun-washed softness of natural materials.

1-LIGHT PENDANT

◀ 19975-732

LEGACY BRASS

28" Dia. x 22" H

1-100W E26 Med. Base

Dimmable | Damp Rated

Textured Linen

3-LIGHT PENDANT

▼ 19976-732

LEGACY BRASS

36" Dia. x 32" H

3-60W E12 Cand. Base

Dimmable | Damp Rated

Textured Linen





Dark Bronze and rope details meet clean lines in this pendant—an elegant fusion of contemporary and Scandi aesthetics, offering warmth, texture, and understated sophistication.



3-LIGHT PENDANT
▲ 12046-868
PLATED DARK BRONZE
24" Dia. x 12" H
3-40W E26 Med. Base
Dimmable | Damp Rated
White Fabric & Natural Rope



Embrace texture, movement, and handcrafted charm with strands of wooden beads that blend earthy elegance and the breezy tranquility of a Bahamian island retreat.



3-LIGHT PENDANT

▲ 19946-732 - LEGACY BRASS

26" Dia. x 26" H

3-60W E12 Cand. Base

Dimmable | Dry Rated

Mixed Brown Wooden Beads & Raffia Rope





3-LIGHT PENDANT

◀ 19885-732

LEGACY BRASS

30" Dia. x 16.5" H

3-40W E12 Cand. Base

Dimmable | Dry Rated

Rafia Rope



Petal-like rattan panels curve with organic grace, casting warm, dappled light. This pendant blends botanical form with artisanal texture—perfect for serene interiors with an appreciation for Island life.



MIRETH



6-LIGHT PENDANT
◀ 19996-860 - DARK BRONZE
28" Dia. x 24" H
6-25W E12 Cand. Base
Dimmable | Dry Rated
Rafia Rope



Reimagine the coastal aesthetic through an abstract, minimalistic lens. Handwoven rope turns in layered, undulating tiers, each curve mimicking the caress of the ocean breeze.





TORVENTO

Clear Glass



6-LIGHT PENDANT

◀ N3146-732

LEGACY BRASS

17.75" Dia. x 18.5" H
6-60W E12 Cand. Base
Dimmable | Damp Rated
Clear Glass



A statement of earthy refinement—a curated mix of handmade clear patinaed glass is suspended in a cascading order, the rectangular panels catching light like sunlit minerals.



9-LIGHT PENDANT

◀ N3148-732

LEGACY BRASS

25.25" Dia. x 22.25" H
9-60W E12 Cand. Base
Dimmable | Damp Rated
Clear Glass

15-LIGHT PENDANT

▼ N3149-732

LEGACY BRASS

32.75" Dia. x 36.5" H
15-60W E12 Cand. Base
Dimmable | Damp Rated
Clear Glass





7-LIGHT FLUSH MOUNT
◀ N3145-732
LEGACY BRASS
28" Dia. x 14.75" H
7-60W E12 Cand. Base
Dimmable | Damp Rated
Clear Glass



TORVENTO

Clear, Grey, and Amber Glass



6-LIGHT PENDANT

◀ N3146-MX-732

LEGACY BRASS

17.75" Dia. x 18.5" H

6-60W E12 Cand. Base
Dimmable | Damp Rated
Clear, Grey, Amber Glass



A statement of earthy refinement—a curated mix of handmade smoke and amber patinaed glass is suspended in a cascading order, the rectangular panels catching light like sunlit minerals.



9-LIGHT PENDANT

◀ N3148-MX-732

LEGACY BRASS

25.25" Dia. x 22.25" H

9-60W E12 Cand. Base
Dimmable | Damp Rated
Clear, Grey, Amber Glass



15-LIGHT PENDANT

▼ N3149-MX-732

LEGACY BRASS

32.75" Dia. x 36.5" H

15-60W E12 Cand. Base
Dimmable | Damp Rated
Clear, Grey, Amber Glass



7-LIGHT FLUSH MOUNT
◀ N3145-MX-732
LEGACY BRASS
28" Dia. x 14.75" H
7-60W E12 Cand. Base
Dimmable | Damp Rated
Clear, Grey, Amber Glass



TORVENTO

Grey Smoke Glass



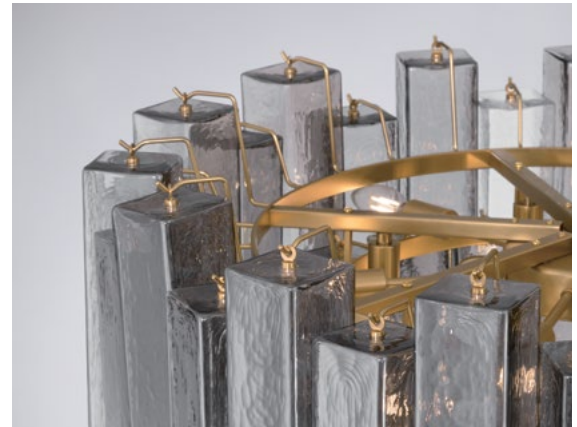
6-LIGHT PENDANT

◀ N3146-GS-732

LEGACY BRASS

17.75" Dia. x 18.5" H

6-60W E12 Cand. Base
Dimmable | Damp Rated
Grey Smoke Glass



A statement of earthy refinement, a curated mix of handmade grey smoke patinaed glass is suspended in a cascading order, the rectangular panels catch light like sunlit minerals.



9-LIGHT PENDANT

◀ N3148-GS-732

LEGACY BRASS

25.25" Dia. x 22.25" H

9-60W E12 Cand. Base
Dimmable | Damp Rated
Grey Smoke Glass

15-LIGHT PENDANT

▼ N3149-GS-732

LEGACY BRASS

32.75" Dia. x 36.5" H

15-60W E12 Cand. Base
Dimmable | Damp Rated
Grey Smoke Glass





7-LIGHT FLUSH MOUNT
◀ N3145-GS-732
LEGACY BRASS
28" Dia. x 14.75" H
7-60W E12 Cand. Base
Dimmable | Damp Rated
Grey Smoke Glass



VIONNE



5-LIGHT PENDANT
▲ 12656-732
LEGACY BRASS
35.5" Dia. x 23.5" H
5-60W E12 Cand. Base
Dimmable | Damp Rated
Clear Dimpled Glass



2-LIGHT WALL SCONCE
▲ 12653-732 - LEGACY BRASS
11.25" W x 14" H x 6.5" Ext.
2-60W E12 Cand. Base
Dimmable | Damp Rated
Clear Dimpled Glass



5-LIGHT SEMI-FLUSH MOUNT
▲ 12654-732 - LEGACY BRASS
22.75" Dia. x 17" H
5-60W E12 Cand. Base
Dimmable | Damp Rated
Clear Dimpled Glass



Suspended in cascading rows of a brass frame, pinhole textured teardrop glass elements evoke the shimmer of rainfall and the exquisite glint of vintage crystal.



5-LIGHT PENDANT
▲ 12655-732 - LEGACY BRASS
32" Dia. x 23" H
5-60W E12 Cand. Base
Dimmable | Damp Rated
Clear Dimpled Glass



VERLA CREST

White & Clear Hand-Formed Glass



5-LIGHT PENDANT

◀ **N3475-732**

LEGACY BRASS

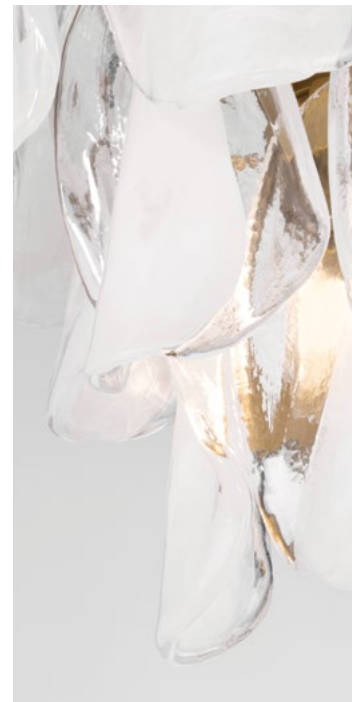
18" Dia. x 19" H
5-60W E12 Cand. Base
Dimmable | Damp Rated
White & Clear Hand-Formed Glass

13-LIGHT PENDANT

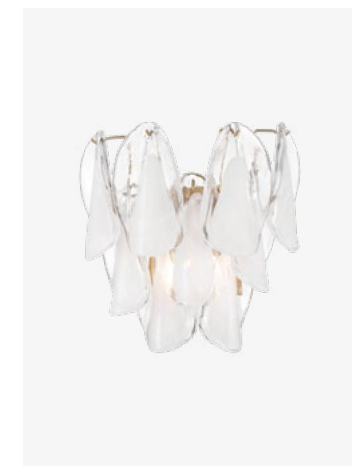
▼ **N3478-732**

LEGACY BRASS

22.5" Dia. x 26.25" H
13-60W E12 Cand. Base
Dimmable | Damp Rated
White & Clear Hand-Formed Glass



Tiers of handmade glass flow in a sculptural rhythm of light and tone, each tinted with an ombré wash. Together, they form a smooth, near-serpentine composition of luster and luxury.



2-LIGHT WALL SCONCE

▲ **N3472-732** - LEGACY BRASS

13.25" W x 14.25" H x 7.5" Ext.
2-60W E12 Cand. Base
Dimmable | Damp Rated
White & Clear Hand-Formed Glass

21-LIGHT PENDANT

◀ **N3479-732** - LEGACY BRASS

32.5" Dia. x 35" H
21-60W E12 Cand. Base
Dimmable | Damp Rated
White & Clear Hand-Formed Glass



6-LIGHT FLUSH MOUNT

◀ **N3476-732** - *LEGACY BRASS*

24.25" Dia. x 14.5" H

6-60W E12 Cand. Base

Dimmable | Damp Rated

White & Clear Hand-Formed Glass

11-LIGHT FLUSH MOUNT

▲ **N3477-732** - *LEGACY BRASS*

31.25" Dia. x 14.5" H

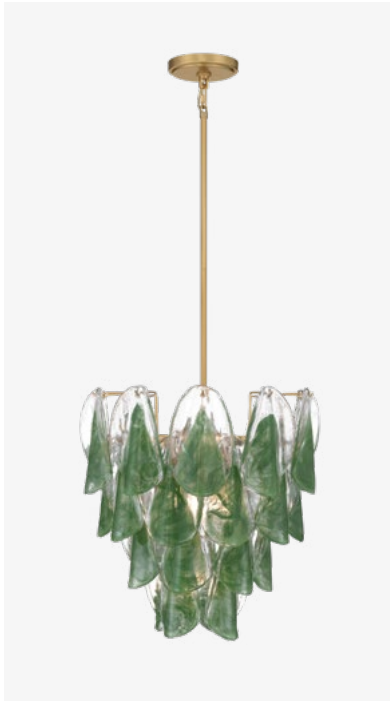
11-60W E12 Cand. Base

Dimmable | Damp Rated

White & Clear Hand-Formed Glass

VERLA CREST

Green & Clear Hand-Formed Glass



5-LIGHT PENDANT

◀ **N3475-G-732**
LEGACY BRASS

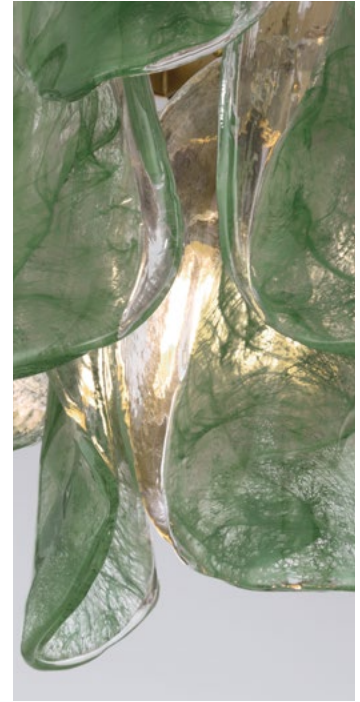
18" Dia. x 19" H
5-60W E12 Cand. Base
Dimmable | Damp Rated
Green & Clear Hand-Formed Glass



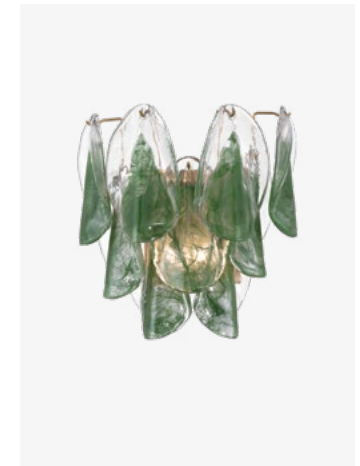
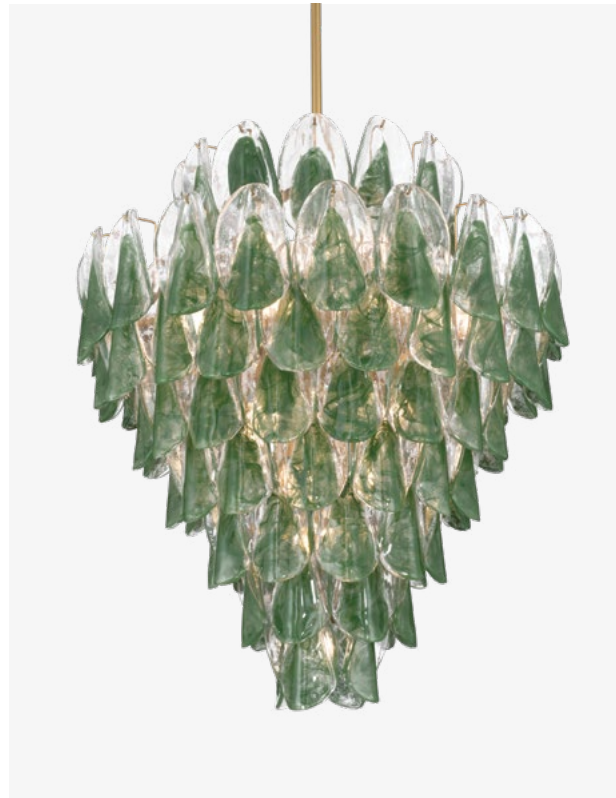
13-LIGHT PENDANT

▼ **N3478-G-732**
LEGACY BRASS

22.5" Dia. x 26.25" H
13-60W E12 Cand. Base
Dimmable | Damp Rated
Green & Clear Hand-Formed Glass



Tiers of handmade glass flow in a sculptural rhythm of light and tone, each tinted with an ombré wash. Together, they form a smooth, near-serpentine composition of luster and luxury.



2-LIGHT WALL SCONCE

▲ **N3472-G-732** - *LEGACY BRASS*

13.25" W x 14.25" H x 7.5" Ext.
2-60W E12 Cand. Base
Dimmable | Damp Rated
Green & Clear Hand-Formed Glass

21-LIGHT PENDANT

◀ **N3479-G-732** - *LEGACY BRASS*

32.5" Dia. x 35" H
21-60W E12 Cand. Base
Dimmable | Damp Rated
Green & Clear Hand-Formed Glass



6-LIGHT FLUSH MOUNT

◀ **N3476-G-732** - LEGACY BRASS
24.25" Dia. x 14.5" H
6-60W E12 Cand. Base
Dimmable | Damp Rated
Green & Clear Hand-Formed Glass

11-LIGHT FLUSH MOUNT

▲ **N3477-G-732** - LEGACY BRASS
31.25" Dia. x 14.5" H
11-60W E12 Cand. Base
Dimmable | Damp Rated
Green & Clear Hand-Formed Glass



6-LIGHT CHANDELIER
◀ 13955-870
PAINTED LEGACY BRASS
30.5" Dia. x 28" H
6-60W E12 Cand. Base
Dimmable | Damp Rated
Crystalline Quartz



5-LIGHT SEMI-FLUSH MOUNT
◀ 13954-870
PAINTED LEGACY BRASS
22" Dia. x 12" H
5-60W E12 Cand. Base
Dimmable | Damp Rated
Crystalline Quartz



2-LIGHT WALL SCONCE
◀ 13952-870
PAINTED LEGACY BRASS
16" W x 17.5" H x 8" Ext.
2-60W E12 Cand. Base
Dimmable | Damp Rated
Crystalline Quartz

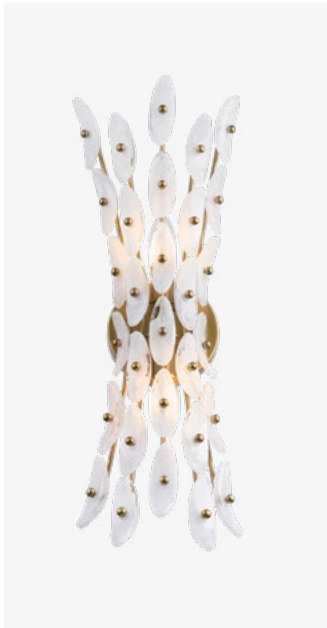
More than a light source, this luminous bouquet transforms space into a living gallery—brass branches bloom with uncut crystalline quartz, refracting light to enchant all in its glow.



8-LIGHT CHANDELIER
◀ 13956-870
PAINTED LEGACY BRASS
36.25" Dia. x 30" H
8-60W E12 Cand. Base
Dimmable | Damp Rated
Crystalline Quartz



SORRA



2-LIGHT WALL SCONCE

◀ N3402-870

PAINTED LEGACY BRASS

8" W x 21.5" H x 5.25" Ext.
2-60W E12 Cand. Base
Dimmable | Damp Rated
White Swirl Glass

6-LIGHT SEMI-FLUSH MOUNT

▼ N3406-870

PAINTED LEGACY BRASS

24" Dia. x 14.25" H
6-60W E12 Cand. Base
Dimmable | Damp Rated
White Swirl Glass



Sprawling like wild fountain grass in bloom, the Sorra collection features brushed brass stems adorned with swirl-frosted glass crescents to glimmer with organic opulence.



14-LIGHT CHANDELIER

◀ N3409-870

PAINTED LEGACY BRASS

40" Dia. x 19" H
14-60W E12 Cand. Base
Dimmable | Damp Rated
White Swirl Glass





VELLINOR



1-LIGHT WALL SCONCE

◀ **N3421-870**

PAINTED LEGACY BRASS

7" W x 18.5" H x 5.5" Ext.
1-60W E12 Cand. Base
Dimmable | Damp Rated
White Ceramic

4-LIGHT SEMI-FLUSH MOUNT

▼ **N3424-870**

PAINTED LEGACY BRASS

28" Dia. x 15.25" H
4-60W E12 Cand. Base
Dimmable | Damp Rated
White Ceramic



Unfolding a soft, yet dramatic display, the Vellinor is a poetic dance between light and lightness as brushed brass stems cradle backlit ceramic feathers, each finely detailed.



10-LIGHT CHANDELIER

◀ **N3428-870**

PAINTED LEGACY BRASS

42" Dia. x 31" H
10-60W E12 Cand. Base
Dimmable | Damp Rated
White Ceramic





SERAPHINE



6-LIGHT CHANDELIER
◀ N3526-736
WEATHERED GOLD
28" Dia. x 31.5" H
6-60W E12 Cand. Base
Dimmable | Damp Rated

11-LIGHT CHANDELIER
▼ N3528-736
WEATHERED GOLD
40" Dia. x 40.5" H
11-60W E12 Cand. Base
Dimmable | Damp Rated



Evoking the kinetic elegance of falling foliage, this composition blends artistry with refined craftsmanship, to create a sculptural focal point that feels both ethereal and architectural.



11-LIGHT LINEAR CHANDELIER
◀ N3527-736
WEATHERED GOLD
60" L x 32" W x 54.25" H
11-60W E12 Cand. Base
Dimmable | Damp Rated



2-LIGHT WALL SCONCE
◀ N3522-736
WEATHERED GOLD
7.25" W x 14.25" H x 6" Ext.
2-60W E12 Cand. Base
Dimmable | Damp Rated



6-LIGHT FLUSH MOUNT
▶ N3525-736
WEATHERED GOLD
29.5" Dia. x 11.5" H
6-60W E12 Cand. Base
Dimmable | Damp Rated



CONVERTIBLE TO
SEMI-FLUSH

6-LIGHT PENDANT

◀ **12396-732**

LEGACY BRASS

32.25" Dia. x 31" H

6-60W E12 Cand. Base

Dimmable | Damp Rated

Alabaster



Diffusing light through the unique striations of alabaster stone, this composition evokes the graphic elegance of a daisy, balancing organic form with refined materials.



This collection layers textured glass like Old World roof barrel tiles, each panel overlapping in a tiered cascade that evokes shelter, rhythm, and structure.



9-LIGHT PENDANT
▲ 12759-732
LEGACY BRASS
22" Sq. x 29.5" H
9-60W E12 Cand. Base
Dimmable | Damp Rated
Clear Textured Glass



JEZELLE



LED FLUSH MOUNT
◀ 15255-732-L
LEGACY BRASS
24" Dia. x 18.75" H
25W LED | 3000K | 90 CRI
Dimmable | Damp Rated

Creating movement and texture with every glint of light, frosted glass cylinders at the center emit a soft, ambient glow—diffused through a golden veil of cascading metallic threads.



LED PENDANT
◀ 15256-732-L
LEGACY BRASS
34.25" Dia. x 51.25" H
40W LED | 3000K | 90 CRI
Dimmable | Damp Rated



BLOOME

Extension



12-LIGHT PENDANT

◀ N2229-732

LEGACY BRASS

30" Dia. x 32" H
12-60W E12 Cand. Base
Dimmable | Damp Rated
White Swirl Glass



8-LIGHT PENDANT

▼ N2227-732

LEGACY BRASS

22" Dia. x 24.25" H
8-60W E12 Cand. Base
Dimmable | Damp Rated
White Swirl Glass



A bouquet of botanical artistry and mid-century glamour, handmade glass lilies suspended in air cast sculptural elegance and romantic ambiance.



5-LIGHT SEMI-FLUSH MOUNT

▲ N2225-732

LEGACY BRASS

25.25" Dia. x 9.5" H
5-60W E12 Cand. Base
Dimmable | Damp Rated
White Swirl Glass



3-LIGHT SEMI-FLUSH MOUNT

◀ N2224-732

LEGACY BRASS

16.75" Dia. x 15" H
3-60W E12 Cand. Base
Dimmable | Damp Rated
White Swirl Glass





ORCHID

Extension



5-LIGHT SEMI-FLUSH MOUNT

◀ N2214-732 - LEGACY BRASS & WHITE GLASS

▼ N2214-A-732 - LEGACY BRASS & AMBER GLASS

18" Dia. x 13.5" H

5-60W E12 Cand. Base

Dimmable | Damp Rated



Suspended from a central brass stem, handmade glass petals diffuse a radiant bloom of light. Each petal is delicately veined and curved to mimic the beauty of wild orchids.





3-LIGHT PENDANT

◀ N5623-732

LEGACY BRASS

24.5" Dia. x 12.75" H
3-40W E12 Cand. Base
Dimmable | Damp Rated
White Handmade Glass

5-LIGHT PENDANT

▼ N5625-732

LEGACY BRASS

14.5" Dia. x 20.5" H
5-40W E12 Cand. Base
Dimmable | Damp Rated
White Handmade Glass



A celebration of Parisian Art Deco design reinterprets the elegance of the 1920s through distinctive stylized fronds and confectionary-inspired forms, translating indulgence into everyday utility.



2-LIGHT WALL SCONCE

▲ N5621-732

LEGACY BRASS

9.5" W x 5.5" H x 10.75" Ext.
2-40W E12 Cand. Base
Dimmable | Damp Rated
White Handmade Glass

3-LIGHT SEMI-FLUSH MOUNT

◀ N5624-732

LEGACY BRASS

18.25" Dia. x 15" H
3-40W E12 Cand. Base
Dimmable | Damp Rated
White Handmade Glass



6-LIGHT LINEAR CHANDELIER

◀ N5626-732

LEGACY BRASS

48" L x 7" W x 6.5" H
6-40W E12 Cand. Base
Dimmable | Damp Rated
White Handmade Glass





3-LIGHT SEMI-FLUSH MOUNT

◀ 10255-732 - LEGACY BRASS

15" Dia. x 11.75" H
3-60W E12 Cand. Base
Dimmable
Clear & Opal White Glass



3-LIGHT PENDANT

◀ 10256-732 - LEGACY BRASS

18" Sq. x 24" H
3-60W E12 Cand. Base
Dimmable
Clear & Opal White Glass

1-LIGHT WALL SCONCE

▼ 10251-732 - LEGACY BRASS

5" W x 14" H x 6" Ext.
1-60W E12 Cand. Base
Dimmable | Damp Rated
Clear & Opal White Glass



Sculpturally elegant with layered luminosity, the double-glass design creates a soft, diffused glow, while brushed brass floral motifs blend refinement and symmetry with a touch of whimsy.



2-LIGHT VANITY

◀ 10252-732

LEGACY BRASS

13.25" W x 7.75" H x 6" Ext.
2-60W E12 Cand. Base
Dimmable | Damp Rated
Clear & Opal White Glass



3-LIGHT VANITY
◀ 10253-732 - *LEGACY BRASS*
21.75" W x 7.75" H x 6" Ext.
3-60W E12 Cand. Base
Dimmable | Damp Rated
Clear & Opal White Glass



8-LIGHT CHANDELIER
 ◀ **12328-876**
 LEGACY BRASS
 & DARK MATTE BLACK
 35" Dia. x 9.25" H
 8-60W E12 Cand. Base
 Dimmable | Damp Rated
 Etched Alabaster



1-LIGHT WALL SCONCE
 ◀ **12321-876**
 LEGACY BRASS
 & DARK MATTE BLACK
 4.5" W x 11" H x 4" Ext.
 1-60W E12 Cand. Base
 Dimmable | Damp Rated
 Etched Alabaster
 ADA Compliant



3-LIGHT VANITY
 ▼ **12323-876**
 LEGACY BRASS
 & DARK MATTE BLACK
 22" W x 9" H x 4" Ext.
 3-60W E12 Cand. Base
 Dimmable | Damp Rated
 Etched Alabaster
 ADA Compliant

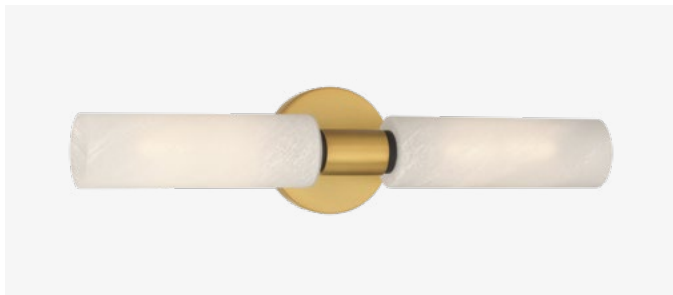
Etched alabaster glass glows with mineral warmth, framed in brass and accented with black brass for contrast. Each piece balances softness and structure, offering Earth mineral rarity and elegance.



5-LIGHT CHANDELIER
 ◀ **12326-876**
 LEGACY BRASS
 & DARK MATTE BLACK
 26" Dia. x 9.25" H
 5-60W E12 Cand. Base
 Dimmable | Damp Rated
 Etched Alabaster



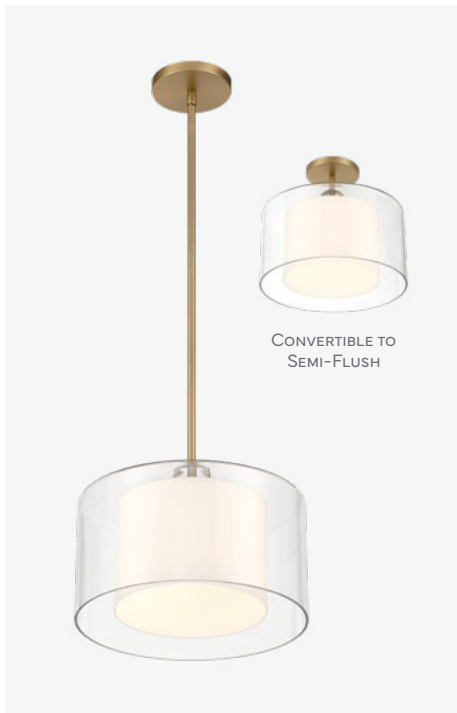
8-LIGHT LINEAR CHANDELIER
 ◀ **12327-876**
 LEGACY BRASS
 & DARK MATTE BLACK
 40.25" L x 17.75" W x 9.25" H
 8-60W E12 Cand. Base
 Dimmable | Damp Rated
 Etched Alabaster



2-LIGHT VANITY
◀ 12322-876
LEGACY BRASS
& DARK MATTE BLACK
21" W x 5" H x 4" Ext.
2-60W E12 Cand. Base
Dimmable | Damp Rated
Etched Alabaster
ADA Compliant



SEVILLE



CONVERTIBLE TO
SEMI-FLUSH

1-LIGHT PENDANT

▲ **2066-732** - LEGACY BRASS

12.75" Dia. x 9.5" H

1-60W E26 Med. Base

Dimmable | Damp Rated

Clear & Etched Opal Glass



1-LIGHT BATH SCONCE

▲ **2061-732** - LEGACY BRASS

6" W x 6" H x 7.25" Ext.

1-60W E12 Cand. Base

Dimmable | Damp Rated

Clear & Etched Opal Glass



2-LIGHT VANITY

▲ **2062-732** - LEGACY BRASS

14.5" W x 6" H x 7.25" Ext.

2-60W E12 Cand. Base

Dimmable | Damp Rated

Clear & Etched Opal Glass

3-LIGHT VANITY

▼ **2063-732** - LEGACY BRASS

22.75" W x 6" H x 7.25" Ext.

3-60W E12 Cand. Base

Dimmable | Damp Rated

Clear & Etched Opal Glass



A dual-cylinder design pairs gently fluted and clear glass to cast a soft, ambient glow—creating a cohesive lighting story that's both versatile and visually compelling.



6-LIGHT CHANDELIER

◀ **2065-732** - LEGACY BRASS

32" Dia. x 17.25" H

6-60W E12 Cand. Base

Dimmable | Damp Rated

Clear & Etched Opal Glass



MOLVENE



5-LIGHT CHANDELIER

◀ 12115-732

LEGACY BRASS

33" Dia. x 31.75" H
5-60W E12 Cand. Base
Dimmable | Damp Rated
White Fabric

3-LIGHT PENDANT

▼ 10426-732

LEGACY BRASS

24" Dia. x 24" H
3-60W E26 Med. Base
Dimmable | Damp Rated
White Fabric



1-LIGHT WALL SCONCE

▲ 10421-732 - LEGACY BRASS

8" W x 21" H x 9" Ext.
1-60W E12 Cand. Base
Dimmable | Damp Rated
White Fabric

Linen shades and brass curves balance traditional sophistication with a relaxed contemporary aesthetic. Tailored proportions make it ideal for layered, transitional interiors.



6-LIGHT LINEAR CHANDELIER

◀ 10427-732 - LEGACY BRASS

48" L x 20" W x 31.75" H
6-60W E12 Cand. Base
Dimmable | Damp Rated
White Fabric



DELGADA



10-LIGHT CHANDELIER

▼ 12129-732 - *LEGACY BRASS*

◀ 12129-899 - *DARK MATTE BLACK*

36" Dia. x 15.25" H

10-60W E26 Med. Base

Dimmable | Damp Rated

Etched Opal Glass



Delgada's etched glass geometric cylinders are cinched by a central crossbar, forming a tailored silhouette that balances geometric clarity with ambient warmth. The result is sculptural, restrained, and quietly luminous.



2-LIGHT BATH BAR

◀ 12122-732 - *LEGACY BRASS*

▲ 12122-899 - *DARK MATTE BLACK*

24" W x 5" H x 4.75" Ext.

2-60W E26 Med. Base

Dimmable | Damp Rated

Etched Opal Glass





8-LIGHT PENDANT

▲ **16028-877**
SAND COAL BLACK
 & *PAINTED LEGACY BRASS*

24" Dia. x 30.75" H
 8-60W E12 Cand. Base
 Dimmable | Damp Rated

8-LIGHT LINEAR CHANDELIER

▼ **16027-877**
SAND COAL BLACK
 & *PAINTED LEGACY BRASS*

52" L x 15" W x 21.75" H
 8-60W E12 Cand. Base
 Dimmable | Damp Rated



4-LIGHT WALL SCONCE

▲ **16020-877**
SAND COAL BLACK
 & *PAINTED LEGACY BRASS*

6.75" W x 17.25" H x 3.5" Ext.
 4-60W E12 Cand. Base
 Dimmable | Damp Rated
 ADA Compliant



6-LIGHT PENDANT

▲ **16026-877**
SAND COAL BLACK
 & *PAINTED LEGACY BRASS*

24" Dia. x 21.75" H
 6-60W E12 Cand. Base
 Dimmable | Damp Rated

A fusion of industrial refinement and contemporary Art Deco—this collection's brass slats create a rhythmic enclosure, casting warm light and sculptural elegance across modern interiors.



3-LIGHT FLUSH MOUNT
◀ 16023-877
SAND COAL BLACK
& PAINTED LEGACY BRASS
16" Dia. x 6.5" H
3-60W E26 Med. Base
Dimmable | Damp Rated



CORTAN



6-LIGHT CHANDELIER
◀ 10316-855
LEGACY BRASS & DARK BRONZE
36" Dia. x 15.25" H
6-60W E12 Cand. Base
Dimmable | Damp Rated

1-LIGHT PENDANT

▼ 10315-855
LEGACY BRASS & DARK BRONZE
16" Dia. x 16" H
1-100W E26 Med. Base
Dimmable | Damp Rated



Masculine elegance. Distinguishably modern. The Cortan collection pairs black matte shades with inner bronze linings that illuminate like spirits in a martini glass—elevated, elemental, and divinely indulgent.



1-LIGHT BATH SCONCE
◀ 10311-855
LEGACY BRASS
& DARK BRONZE
8" W x 15" H x 9.5" Ext.
1-60W E12 Cand. Base
Dimmable | Damp Rated



FENRIC



Mid-century elegance meets utilitarian form. A contrast of bronze and brass evokes vintage task lighting, softened by a smooth finish for a light that's deceptively minimalistic.

1-LIGHT PENDANT

◀ 13105-855 - LEGACY BRASS & DARK BRONZE

▼ 13105-796 - DARK BRONZE & LEGACY BRASS

13.75" Dia. x 19.5" H

1-100W E26 Med. Base

Dimmable | Damp Rated





LUNIVA



In a celestial pairing of Art Deco glamour and modern minimalism, the Luniva casts a subtle dappled light through a waffle glass globe orbited by a brushed brass ring.

1-LIGHT MINI PENDANT
◀ 10126-732 - LEGACY BRASS
9.25" Dia. x 8.5" H
1-60W E26 Med. Base
Dimmable | Damp Rated
Clear Square Textured Glass

1-LIGHT MINI PENDANT
▼ 10125-732 - LEGACY BRASS
9.25" Dia. x 8.5" H
1-60W E26 Med. Base
Dimmable | Damp Rated
Clear Square Textured Glass





COOK REVISIT
RENOVATE
RENOVATE

CORALYN



1-LIGHT PENDANT
11895-84 - BRUSHED NICKEL
11895-732 - LEGACY BRASS
11895-899 - DARK MATTE BLACK
13.25" Dia. x 17.25" H
1-60W E26 Med. Base
Dimmable | Damp Rated
Clear Glass

A conical glass shade floats within a brushed brass frame—elegant, airy, and architectural. The stylized shape glass and open design exudes sculptural geometry for a refined, contemporary presence.





ORBIS



Clear glass pendants with stylistically minimalistic brass detailing offer airy elegance and timeless versatility. Their refined silhouettes suit both transitional and contemporary interiors with understated sophistication.



1-LIGHT MINI PENDANT

◀ 13125-84 - BRUSHED NICKEL

13125-732 - LEGACY BRASS

13125-899 - DARK MATTE BLACK

10" Dia. x 15.75" H

1-60W E26 Med. Base

Dimmable | Damp Rated

Clear Glass





3-LIGHT SEMI-FLUSH MOUNT

12625-84 - BRUSHED NICKEL

▲ 12625-732 - LEGACY BRASS

◀ 12625-868 - PLATED DARK BRONZE

15" Dia. x 9.25" H

3-60W E26 Med. Base

Dimmable | Damp Rated

Etched White Glass



The sleek simplicity of a flush-mounted light with the sculptural presence of a pendant. A brass shade anchors the design while etched glass diffuses soft light.



HALORA



3-LIGHT SEMI-FLUSH MOUNT
14086-84 - BRUSHED NICKEL
▲ 14086-732 - LEGACY BRASS
◀ 14086-899 - DARK MATTE BLACK
15.25" Dia. x 10.25" H
3-60W E12 Cand. Base
Dimmable | Damp Rated
Etched Opal Glass

Saddle and steel. Equestrian elegance meets industrial precision in a brushed brass frame, where angled support rods echo the form of harness fittings and saddle work







2-LIGHT SEMI-FLUSH MOUNT
◀ **N2352-732** - *LEGACY BRASS*
12" Dia. x 7.5" H
2-60W E12 Cand. Base
Dimmable | Damp Rated
Alabaster

4-LIGHT SEMI-FLUSH MOUNT
▼ **N2354-732** - *LEGACY BRASS*
16" Dia. x 8.75" H
4-60W E12 Cand. Base
Dimmable | Damp Rated
Alabaster

A study in the updated traditional aesthetic, this semi-flush mount pairs a brushed brass finish with a clean drum silhouette, giving a nautical appeal through its porthole-inspired form.







LED FLUSH MOUNT

14226-84-L - BRUSHED NICKEL

▲ 14226-732-L - LEGACY BRASS

◀ 14226-868-L - PLATED DARK BRONZE

13" Dia. x 3.5" H

28W LED | 5CCT* | 90 CRI

Dimmable | Damp Rated

Etched Opal Glass

Adorned with discreet metal fastenings, this industrial-inspired design channels light through etched opal glass, delivering warm, ambient light.



*2700K, 3000K, 3500K, 4000K, 5000K





LED FLUSH MOUNT

14225-890-L

CHROME & BRUSHED NICKEL

▲ **14225-876-L**

LEGACY BRASS & DARK MATTE BLACK

◀ **14225-855-L**

DARK BRONZE & LEGACY BRASS

13.75" Dia. x 4.25" H

28W LED | 5 CCT* | 90 CRI

Dimmable | Damp Rated

Etched Opal Glass

A modern drum reimaged with industrial-era styling pairing contrasting metal finishes; etched opal glass tempers the geometry and releases a warm, layered glow.



*2700K, 3000K, 3500K, 4000K, 5000K



PURELIGHT

Extension



2-LIGHT FLUSH MOUNT

3939-879

LEGACY BRASS & OFF WHITE CREAM

▲ **3939-732**

LEGACY BRASS

◀ **3939-876**

LEGACY BRASS & DARK MATTE BLACK

15" Dia. x 5.5" H

2-100W E26 Med. Base

Dimmable | Damp Rated

Etched Opal Glass



Etched opal glass softens the structurally rigid metal drum silhouette, balancing ambient warmth with bold materiality for industrial-inspired interiors.



ARCLUME



LED FLUSH MOUNT
18636-887-L
CHROME & DARK MATTE BLACK
 ▲ **18636-876-L**
LEGACY BRASS & DARK MATTE BLACK
 ◀ **18636-798-L**
DARK MATTE BLACK & LEGACY BRASS
 18.75" L x 18.75" W x 2.75" H
 45W LED | 5CCT* | 90 CRI
 Dimmable | Damp Rated
 Etched White Glass

Encased in a rim ornamented with discreet fastenings, this piece reinterprets industrial-era utility with contrasting metal fastenings and light-softening etched opal glass.



LED FLUSH MOUNT
 ◀ **18635-887-L**
CHROME & DARK MATTE BLACK
 14.75" L x 14.75" W x 2.75" H
 30W LED | 5CCT* | 90 CRI
 Dimmable | Damp Rated
 Etched White Glass

LED FLUSH MOUNT
 ◀ **18635-876-L**
LEGACY BRASS & DARK MATTE BLACK
 14.75" L x 14.75" W x 2.75" H
 30W LED | 5CCT* | 90 CRI
 Dimmable | Damp Rated
 Etched White Glass

LED FLUSH MOUNT
 ◀ **18635-798-L**
DARK MATTE BLACK & LEGACY BRASS
 14.75" L x 14.75" W x 2.75" H
 30W LED | 5CCT* | 90 CRI
 Dimmable | Damp Rated
 Etched White Glass

*2700K, 3000K, 3500K, 4000K, 5000K



LED BATH BAR
18752-887-L - CHROME & DARK MATTE BLACK
▲ 18752-876-L - LEGACY BRASS & DARK MATTE BLACK
◀ 18752-798-L - DARK MATTE BLACK & LEGACY BRASS
24" W x 5" H x 4.75" Ext.
24W LED | 3000K | 90 CRI
Dimmable | Damp Rated
Etched White Glass

BRIENNE



1-LIGHT BATH SCONCE
◀ 10271-876
LEGACY BRASS
& DARK MATTE BLACK
5.5" W x 10.75" H x 8.5" Ext.
1-60W E12 Cand. Base
Dimmable | Damp Rated
Etched White Glass



Masculine elegance meets modern refinement to update the traditional aesthetic. A balance of etched glass shades, black curved arms, and warm brass lend a masculine elegance to transitional interiors.



2-LIGHT VANITY
◀ 10272-876
LEGACY BRASS
& DARK MATTE BLACK
15" W x 10.75" H x 9" Ext.
2-60W E12 Cand. Base
Dimmable | Damp Rated
Etched White Glass



3-LIGHT VANITY
▼ 10273-876
LEGACY BRASS
& DARK MATTE BLACK
23" W x 10.75" H x 9" Ext.
3-60W E12 Cand. Base
Dimmable | Damp Rated
Etched White Glass



ORTESA



3-LIGHT VANITY

- ◀ 12013-84 - BRUSHED NICKEL
- 12013-732 - LEGACY BRASS
- 12013-899 - DARK MATTE BLACK

24" W x 10.5" H x 6.5" Ext.
3-60W E26 Med. Base
Dimmable | Damp Rated
Etched White Glass

Sculptural simplicity meets modern versatility. Frosted glass globes cast a soft, flattering glow, held by a streamlined frame that feels nearly as timeless as light itself.



2-LIGHT VANITY

- 12012-84 - BRUSHED NICKEL
- 12012-732 - LEGACY BRASS
- ▲ 12012-899 - DARK MATTE BLACK

15" W x 10.5" H x 6.5" Ext.
2-60W E26 Med. Base
Dimmable | Damp Rated
Etched White Glass



1-LIGHT BATH SCONCE

- 12011-84 - BRUSHED NICKEL
- ◀ 12011-732 - LEGACY BRASS
- 12011-899 - DARK MATTE BLACK

6" W x 10.5" H x 6.5" Ext.
1-60W E26 Med. Base
Dimmable | Damp Rated
Etched White Glass





1-LIGHT BATH SCNCE

14371-84 - BRUSHED NICKEL

▲ 14371-732 - LEGACY BRASS

14371-899 - DARK MATTE BLACK

5.25" W x 9.5" H x 6.75" Ext.

1-60W E26 Med. Base

Dimmable | Damp Rated
Alabaster



2-LIGHT VANITY

◀ 14372-84 - BRUSHED NICKEL

14372-732 - LEGACY BRASS

14372-899 - DARK MATTE BLACK

14.25" W x 8.25" H x 6.75" Ext.

2-60W E26 Med. Base

Dimmable | Damp Rated
Alabaster



3-LIGHT VANITY

14373-84 - BRUSHED NICKEL

14373-732 - LEGACY BRASS

▼ 14373-899 - DARK MATTE BLACK

22.75" W x 8.25" H x 6.75" Ext.

3-60W E26 Med. Base

Dimmable | Damp Rated
Alabaster



A study in form and finish, structured metal frames pair with alabaster glass to balance clean geometry and soft warmth—lighting a gentle beginning and graceful end to each day.



BARWELL

Extension



1-LIGHT MINI PENDANT
◀ **5686-84**
BRUSHED NICKEL
10" Dia. x 11" H
1-60W E26 Med. Base
Dimmable | Damp Rated
Clear Glass

1-LIGHT BATH SCONCE

▼ **5680-84**
BRUSHED NICKEL
10" W x 14.25" H x 11.5" Ext.
1-60W E26 Med. Base
Dimmable | Damp Rated
Clear Glass



1-LIGHT BATH SCONCE

▼ **5681-84**
BRUSHED NICKEL
6" W x 11.5" H x 7.75" Ext.
1-60W E26 Med. Base
Dimmable | Damp Rated
Clear Glass



A stately composition rooted in Old English refinement, the Barwell reimagines the traditional tulip shade with modern clarity and classic symmetry.



2-LIGHT VANITY

◀ **5682-84**
BRUSHED NICKEL
15" W x 11.5" H x 7.75" Ext.
2-60W E26 Med. Base
Dimmable | Damp Rated
Clear Glass



3-LIGHT VANITY

◀ **5683-84**
BRUSHED NICKEL
24" W x 11.5" H x 7.75" Ext.
3-60W E26 Med. Base
Dimmable | Damp Rated
Clear Glass



4-LIGHT VANITY

▼ **5684-84**
BRUSHED NICKEL
33" W x 11.5" H x 7.75" Ext.
4-60W E26 Med. Base
Dimmable | Damp Rated
Clear Glass



CORNWELL

Extension



1-LIGHT BATH SCONCE

◀ 2571-899

DARK MATTE BLACK

6" W x 10" H x 8.25" Ext.
1-60W E26 Med. Base
Dimmable | Damp Rated
Etched Opal Glass

2-LIGHT VANITY

▼ 2572-899

DARK MATTE BLACK

16" W x 8" H x 8.25" Ext.
2-60W E26 Med. Base
Dimmable | Damp Rated
Etched Opal Glass



Sculpted opal domes and brushed brass mounts offer timeless symmetry and ambient softness—ideal for transitional spaces seeking quiet luxury and contemporary elegance.



3-LIGHT VANITY

◀ 2573-899

DARK MATTE BLACK

23" W x 8" H x 8.25" Ext.
3-60W E26 Med. Base
Dimmable | Damp Rated
Etched Opal Glass



LENORA



19-LIGHT CHANDELIER

◀ **N3509-860**

DARK BRONZE

47.25" Dia. x 31.25" H

19-60W E12 Cand. Base

Dimmable | Damp Rated

Clear Ribbed Glass

13-LIGHT CHANDELIER

▼ **N3508-860**

DARK BRONZE

34.25" Dia. x 27.5" H

13-60W E12 Cand. Base

Dimmable | Damp Rated

Clear Ribbed Glass



Clusters of handmade glass globes seemingly dance midair casting light like a ripple on water, creating a playfully rhythmic display.



10-LIGHT LINEAR CHANDELIER

◀ **N3507-860** - *DARK BRONZE*

47" L x 16.5" W x 10" H

10-60W E12 Cand. Base

Dimmable | Damp Rated

Clear Ribbed Glass



1-LIGHT BATH SCONCE
◀ N3501-860
DARK BRONZE
6.75" W x 8.25" H x 9.25" Ext.
1-60W E12 Cand. Base
Dimmable | Damp Rated
Clear Ribbed Glass

BELLFORGE



A refined interplay of contrast and form pairs white linen shades with matte black and brass frame, echoing vintage elegance through a modern lens.





DORIANNE



12-LIGHT CHANDELIER
◀ N3318-891
TEXTURED DUSKEN BRASS
34" Dia. x 20" H
12-60W E12 Cand. Base
Dimmable | Damp Rated



Sweeping arms radiate from a central column, each ending in candle-style bulbs. The silhouette evokes classical symmetry, offering ambient warmth and architectural elegance for formal dining or entry spaces.



16-LIGHT CHANDELIER
◀ N3319-891
TEXTURED DUSKEN BRASS
44" Dia. x 28" H
16-60W E12 Cand. Base
Dimmable | Damp Rated



DALVOR



3-LIGHT SEMI-FLUSH MOUNT

▲ 12417-860
DARK BRONZE

15" Dia. x 12.25" H
3-60W E12 Cand. Base
Dimmable | Damp Rated
White Glass & White Linen

6-LIGHT PENDANT

▼ 12416-860
DARK BRONZE

36" Dia. x 14.25" H
6-60W E26 Med. Base
Dimmable | Damp Rated
White Glass & White Linen



3-LIGHT PENDANT

◀ 12415-860

DARK BRONZE

14" Dia. x 14.5" H
3-60W E12 Cand. Base
Dimmable | Damp Rated
White Glass & White Linen

6-LIGHT PENDANT

▼ 12418-860

DARK BRONZE

36" Dia. x 29.5" H
6-60W E12 Cand. Base
Dimmable | Damp Rated



Belt-like rims radiate through the Dalvor collection, cinching linen shades like tailored garments to form hourglass silhouettes—balancing proportion, tone, and ambient light diffusion.



12-LIGHT PENDANT

◀ 12419-860 - DARK BRONZE

42.75" Dia. x 42.25" H
12-60W E12 Cand. Base
Dimmable | Damp Rated





Slats of whitewashed wood encircle a dark metal frame, blending sea-salt air patina with an Industrial-era undertone. Ideal for interiors that sway between coastal and transitional.



6-LIGHT PENDANT
▲ 12455-860 - *DARK BRONZE*
30" Dia. x 18.5" H
6-60W E12 Cand. Base
Dimmable | Dry Rated
Whitewashed Wood



Sweeping brass bands twist with sculptural force, wrapping light in layered motion. This is lighting as art: bold, expressive, and intrepidly modern.



3-LIGHT PENDANT

▲ 19925-855

LEGACY BRASS & DARK BRONZE

22" L x 20" W x 18" H

3-40W E26 Med. Base

Dimmable | Damp Rated





1-LIGHT PENDANT

◀ 19914-789 - ANTIQUE BRASS

24" Dia. x 13" H

1-100W E26 Med. Base

Dimmable | Damp Rated

1-LIGHT PENDANT

▼ 19915-789 - ANTIQUE BRASS

36" Dia. x 16" H

1-100W E26 Med. Base

Dimmable | Damp Rated

Belonging in interiors that cherish material storytelling, the Zinnia evokes the excitement of found relics and elemental elegance—lighting that is not just functional, but sculptural.





YORKSHIRE



4-LIGHT PENDANT

◀ 18314-880

*DARK MATTE BLACK
& LEGACY BRASS*

20.75" Dia. x 15.5" H

4-60W E12 Cand. Base
Dimmable | Damp Rated

2-LIGHT PENDANT

▼ 18312-880

*DARK MATTE BLACK
& LEGACY BRASS*

14" Dia. x 11" H

2-60W E12 Cand. Base
Dimmable | Damp Rated

A future-forward silhouette with sculptural intent—this collection pairs matte black and brass with a hemispheric shade, casting light in a focused arc.







1-LIGHT PENDANT
◀ 19965-732 - *LEGACY BRASS*
13.25" Dia. x 14.25" H
1-100W E26 Med. Base
Dimmable | Damp Rated
Clear Water Glass



A clear conical shade and brass hardware lend industrial clarity to this pendant. Minimal yet expressive, it suits transitional spaces seeking tonal warmth and sculptural restraint.



DRA Xen



1-LIGHT WALL SCONCE
◀ 10281-860
DARK BRONZE
5.5" W x 18" H x 7.75" Ext.
1-60W E12 Cand. Base
Dimmable | Damp Rated
White Linen



Tailored and ambient, linen shades rise above each bulb—perched on sculptural metal arms to form a graceful sanctuary of light, serene in posture and sacred in glow.



16-LIGHT CHANDELIER
◀ 10286-860 - DARK BRONZE
32" Dia. x 22" H
16-60W E12 Cand. Base
Dimmable | Damp Rated
White Linen



LORENTH



2-LIGHT FLUSH MOUNT

▶ 17647-899

DARK MATTE BLACK

15" L x 15" W x 5.5" H
2-60W E26 Med. Base
Dimmable | Damp Rated
Clear Glass



1-LIGHT PENDANT

◀ 17649-899

DARK MATTE BLACK

18" L x 18" W x 16.75" H
1-60W E26 Med. Base
Dimmable | Damp Rated
Clear Glass

Heritage forms. Modern clarity. An antique-inspired composition reimagined with clear glass shades, exposing bulbs for a clean and minimalistic contemporary expression.



1-LIGHT BATH SCONCE

◀ 17641-899

DARK MATTE BLACK

6.75" W x 8.75" H x 7.25" Ext.
1-60W E26 Med. Base
Dimmable | Damp Rated
Clear Glass



2-LIGHT VANITY

◀ 17642-899

DARK MATTE BLACK

15.5" W x 8.25" H x 7.25" Ext.
2-60W E26 Med. Base
Dimmable | Damp Rated
Clear Glass

3-LIGHT VANITY

▼ 17643-899

DARK MATTE BLACK

24.25" W x 8.25" H x 7.25" Ext.
3-60W E26 Med. Base
Dimmable | Damp Rated
Clear Glass





NOELLEA



1-LIGHT BATH SCONCE

12481-84 - BRUSHED NICKEL

12481-732 - LEGACY BRASS

◀ 12481-796 - DARK BRONZE & LEGACY BRASS

6.5" W x 7.5" H x 7.5" Ext.

1-60W E26 Med. Base

Dimmable | Damp Rated

Clear Glass

2-LIGHT VANITY

◀ 12482-84 - BRUSHED NICKEL

12482-732 - LEGACY BRASS

12482-796 - DARK BRONZE & LEGACY BRASS

15.25" W x 7.5" H x 7.5" Ext.

2-60W E26 Med. Base

Dimmable | Damp Rated

Clear Glass

3-LIGHT VANITY

12483-84 - BRUSHED NICKEL

◀ 12483-732 - LEGACY BRASS

12483-796 - DARK BRONZE & LEGACY BRASS

24.25" W x 7.5" H x 7.5" Ext.

3-60W E26 Med. Base

Dimmable | Damp Rated

Clear Glass



Mid-century simplicity meets sculptural clarity. Exposed bulbs within cylindrical glass shades cast light, while brass and matte black finishes add contrast and elegance.



8-LIGHT CHANDELIER

◀ 12728-796

DARK BRONZE & LEGACY BRASS

50" Dia. x 17.5" H

8-60W E12 Cand. Base

Dimmable | Damp Rated

Clear Glass



5-LIGHT LINEAR CHANDELIER
◀ 12727-796
DARK BRONZE & LEGACY BRASS
47.5" L x 6.5" W x 18.5" H
5-60W E26 Med. Base
Dimmable | Damp Rated
Clear Glass



1-LIGHT PENDANT

- ◀ 1916-732 - *LEGACY BRASS*
- 1916-899 - *DARK MATTE BLACK*

15.5" Dia. x 18" H
1-60W E26 Med. Base
Dimmable | Damp Rated
Clear & Grey Glass

1-LIGHT BATH SCENCE

- 1911-732 - *LEGACY BRASS*
- ▼ 1911-899 - *DARK MATTE BLACK*

5" W x 10.5" H x 8.75" Ext.
1-60W E12 Cand. Base
Dimmable | Damp Rated
Clear & Grey Glass



Understated yet expressive, contrast and clarity pairs layers of grey and clear cylindrical glass with bold metalwork to balance industrial edge with modern elegance.



2-LIGHT VANITY

- ◀ 1912-732 - *LEGACY BRASS*
- 1912-899 - *DARK MATTE BLACK*

14.25" W x 10.5" H x 8.75" Ext.
2-60W E12 Cand. Base
Dimmable | Damp Rated
Clear & Grey Glass

3-LIGHT VANITY

- 1913-732 - *LEGACY BRASS*
- ▼ 1913-899 - *DARK MATTE BLACK*

24" W x 10.5" H x 8.75" Ext.
3-60W E12 Cand. Base
Dimmable | Damp Rated
Clear & Grey Glass





STRATFORD



INCLUDES WHITE & BLACK
CANDLE SLEEVES

2-LIGHT WALL SCONCE
◀ 78603-899

DARK MATTE BLACK
9.5" W x 17" H x 7.25" Ext.
2-60W E12 Cand. Base
Dimmable | Wet Rated
Clear Glass

From darkness comes light, and as proof, the Stratford illuminates with mystique, casting a modern glow through clear glass and clean, architectural framing.



INCLUDES WHITE & BLACK
CANDLE SLEEVES

2-LIGHT WALL SCONCE
◀ 78602-899

DARK MATTE BLACK
9.5" W x 23.5" H x 7.25" Ext.
2-60W E12 Cand. Base
Dimmable | Wet Rated
Clear Glass



EDGEWOOD



1-LIGHT POST MOUNT

◀ **78206-899**

DARK MATTE BLACK

7.5" W x 21.5" H x 7.5" Ext.
1-100W E26 Med. Base
Dimmable | Wet Rated
Clear Ribbed Glass

1-LIGHT WALL SCONCE

▶ **78201-899**

DARK MATTE BLACK

5.5" W x 16" H x 6.5" Ext.
1-100W E26 Med. Base
Dimmable | Wet Rated
Clear Ribbed Glass

1-LIGHT WALL SCONCE

▼ **78202-899**

DARK MATTE BLACK

7.5" W x 19" H x 8.5" Ext.
1-100W E26 Med. Base
Dimmable | Wet Rated
Clear Ribbed Glass



Grounded in a minimalist-meets-industrial aesthetic, the pairing of ribbed glass and bold metal framing creates a dynamic interplay of light and shadow







LED WALL SCNCE
◀ 79501-877-L
SAND COAL BLACK
& PAINTED LEGACY BRASS
7.5" W x 9" H x 3.25" Ext.
13W LED | 3000K | 90 CRI
Dimmable | Wet Rated
ADA Compliant



A golden ribbed panel glows from within, like sunlight through slatted blinds. The matte black casing adds contrast and clarity, ideal for contemporary homes.



LED WALL SCNCE
◀ 79500-877-L
SAND COAL BLACK
& PAINTED LEGACY BRASS
7.5" W x 15" H x 3.25" Ext.
13W LED | 3000K | 90 CRI
Dimmable | Wet Rated
ADA Compliant



AVENELLE



LED WALL SCONCE
◀ **79300-66-L**
SAND COAL BLACK
6.5" W x 13.75" H x 3.25" Ext.
20W LED | 3000K | 90 CRI
Wet Rated
Grey Slate
ADA Compliant



Slate stone and backlit black metal give this fixture a uniquely modern edge. Dramatic in silhouette, minimalist in form, and rich in contrast for a bold statement on contemporary exteriors.



LED WALL SCONCE
◀ **79301-66-L**
SAND COAL BLACK
8" W x 18.75" H x 3.5" Ext.
26W LED | 3000K | 90 CRI
Wet Rated
Grey Slate
ADA Compliant



NORRIN



LED WALL SCONCE
◀ **79200-66-L**
SAND COAL BLACK
6" W x 16" H x 3" Ext.
14W LED | 3000K | 90 CRI
Wet Rated
Grey Slate
ADA Compliant

LED WALL SCONCE
▼ **79201-66-L**
SAND COAL BLACK
8" W x 21.25" H x 3.75" Ext.
20W LED | 3000K | 90 CRI
Wet Rated
Grey Slate
ADA Compliant



A minimalistic design casts light across gray slate, revealing the organic, earthen grooves for a dramatic display that evokes permanence, strength, and structure.





BRIARLANE



1-LIGHT WALL SCONCE

◀ 78401-886

*PAINTED LEGACY BRASS
& DARK BRONZE*

6" W x 14.5" H x 4.5" Ext.
1-60W E12 Cand. Base
Dimmable | Wet Rated
Clear Glass



For transitional exteriors, a candle-style bulb reflects the golden warmth of a brushed brass backdrop. The vertical rectangular orientation evokes classic lanterns, framed by a modern, utilitarian edge.



2-LIGHT WALL SCONCE

◀ 78402-886

*PAINTED LEGACY BRASS
& DARK BRONZE*

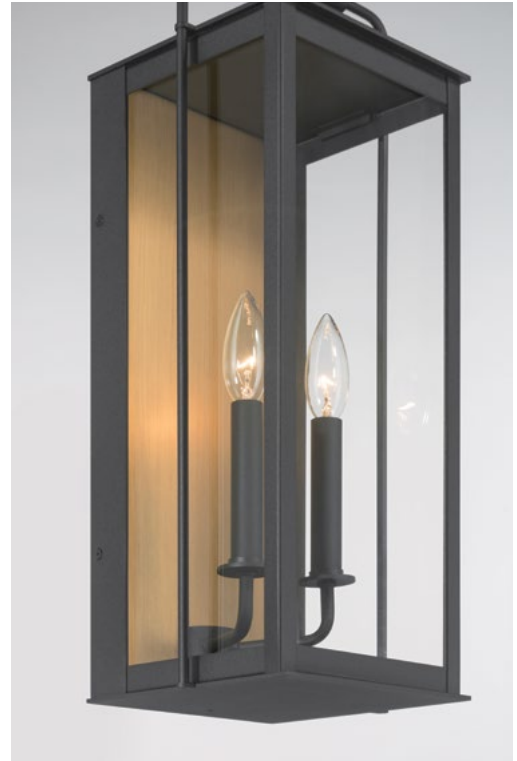
8.5" W x 20" H x 5.25" Ext.
2-40W E12 Cand. Base
Dimmable | Wet Rated
Clear Glass



ABERDEEN



2-LIGHT WALL SCONCE
▲ 78502-877
SAND COAL BLACK
& PAINTED LEGACY BRASS
8.75" W x 20" H x 7.5" Ext.
2-40W E12 Cand. Base
Dimmable | Wet Rated
Clear Glass



Distinguished by a brass back panel that enriches light with a warm, welcoming glow, the Aberdeen invites early American elegance to join the brooding modern aesthetic.



1-LIGHT WALL SCONCE
▲ 78501-877
SAND COAL BLACK
& PAINTED LEGACY BRASS
5.75" W x 13.25" H x 4.75" Ext.
1-60W E12 Cand. Base
Dimmable | Wet Rated
Clear Glass



2-LIGHT WALL SCONCE
▲ 78503-877
SAND COAL BLACK
& PAINTED LEGACY BRASS
7" W x 16.5" H x 6" Ext.
2-40W E12 Cand. Base
Dimmable | Wet Rated
Clear Glass



BAYRA



3-LIGHT LANTERN

◀ **78103-886**

*PAINTED LEGACY BRASS
& DARK BRONZE*

10" W x 21" H x 11.25" Ext.
3-60W E12 Cand. Base
Dimmable | Wet Rated
Clear Glass



Blending contemporary stylization with traditional form, a classic street lantern illuminates the modern age topped with a sculptural brass nail and ring-mount detail.



2-LIGHT LANTERN

▲ **78102-886**

*PAINTED LEGACY BRASS
& DARK BRONZE*

8" W x 17" H x 9.25" Ext.
2-60W E12 Cand. Base
Dimmable | Wet Rated
Clear Glass



1-LIGHT LANTERN

◀ **78100-886**

*PAINTED LEGACY BRASS
& DARK BRONZE*

6" W x 13" H x 7" Ext.
1-60W E26 Med. Base
Dimmable | Wet Rated
Clear Glass



HURSTBORNE



2-LIGHT LANTERN

◀ 78302-734

DARK MATTE BLACK & PAINTED LEGACY BRASS

7" W x 18.25" H x 5.5" Ext.
2-60W E12 Cand. Base
Dimmable | Wet Rated
Clear Glass



1-LIGHT LANTERN

◀ 78301-734

DARK MATTE BLACK & PAINTED LEGACY BRASS

6" W x 15.75" H x 4.75" Ext.
1-100W E26 Med. Base
Dimmable | Wet Rated
Clear Glass



3-LIGHT POST LANTERN

▲ 78306-734

DARK MATTE BLACK & PAINTED LEGACY BRASS

8.5" Sq. x 24.75" H
3-60W E12 Cand. Base
Dimmable | Wet Rated
Clear Glass

3-LIGHT HANGING LANTERN

◀ 78304-734

DARK MATTE BLACK & PAINTED LEGACY BRASS

8.5" Sq. x 23.75" H
3-60W E12 Cand. Base
Dimmable | Wet Rated
Clear Glass

A timeless exterior accent, this lantern-style sconce pairs matte black framing with a brass socket detail—balancing heritage charm and modern edge in a tailored architectural silhouette.





BRANWYN



1-LIGHT LANTERN

◀ 79102-66

SAND COAL BLACK

7.25" W x 13" H x 7.25" Ext.

1-60W E26 Med. Base

Dimmable | Wet Rated

Clear Glass

1-LIGHT LANTERN

▲ 79103-66

SAND COAL BLACK

11" W x 20" H x 10.75" Ext.

1-60W E26 Med. Base

Dimmable | Wet Rated

Clear Glass



With a decorative finial and ornamental mounting arm, this antique gas-lantern inspired light introduces classic form to modern durability.



CALEN



1-LIGHT WALL SCONCE
◀ 78700-899
DARK MATTE BLACK
10.25" W x 15.25" H x 11.5" Ext.
1-60W E26 Med. Base
Dimmable | Wet Rated
Clear Glass

Offering both contrast and clarity, this wall sconce features a black metal arm and clear glass dome, delivering warm illumination with a refined, industrial edge.





PENDANTS



10388-876 | Pg 8



10385-732 | Pg 8



10386-732 | Pg 8



N3126-732 | Pg 14



N3128-732 | Pg 14



N3129-732 | Pg 14



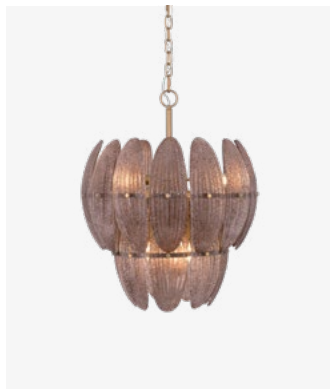
N2246-732 | Pg 16



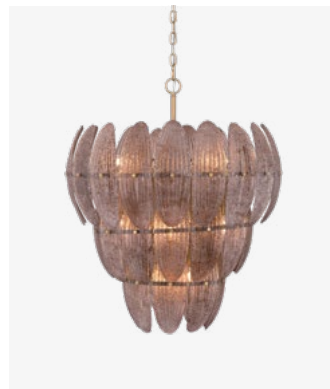
N2248-732 | Pg 16



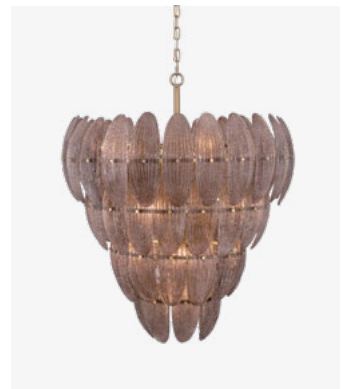
N2249-732 | Pg 16



N2246-BR-732 | Pg 18



N2248-BR-732 | Pg 18



N2249-BR-732 | Pg 18



N2246-GR-732 | Pg 20



N2248-GR-732 | Pg 20



N2249-GR-732 | Pg 20



12855-732 | Pg 22



12854-732 | Pg 22



12856-732 | Pg 22



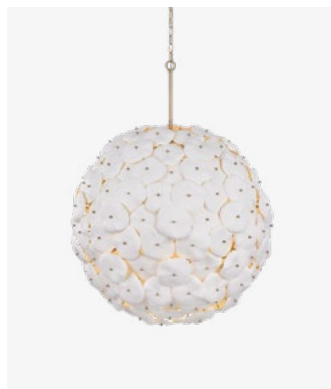
N3676-732 | Pg 24



N3678-732 | Pg 24



N1827-732 | Pg 26



N1829-732 | Pg 26



2526-732 | Pg 28



N2373-732-L | Pg 30



N2379-732-L | Pg 30



10416-860-L | Pg 34



10419-860-L | Pg 34



2036-732-L | Pg 40



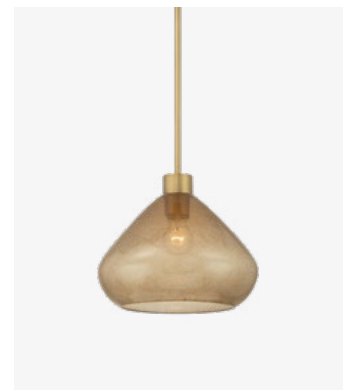
19416-84 | Pg 44



19416-732 | Pg 44



19415-84 | Pg 44



19415-732 | Pg 44

PENDANTS



19414-84 | Pg 44



19414-732 | Pg 44



19615-732 | Pg 46



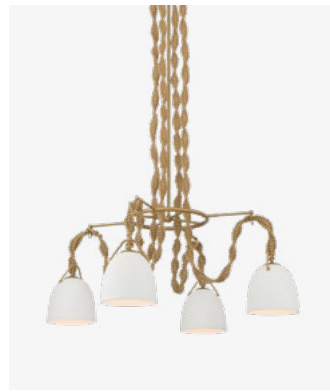
19615-899 | Pg 46



19875-732 | Pg 48



19986-899 | Pg 50



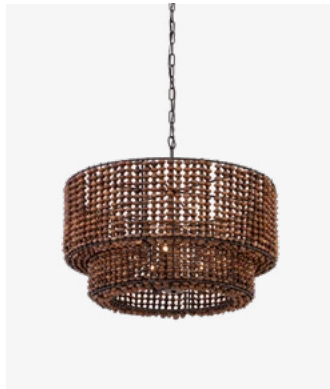
16066-732 | Pg 58



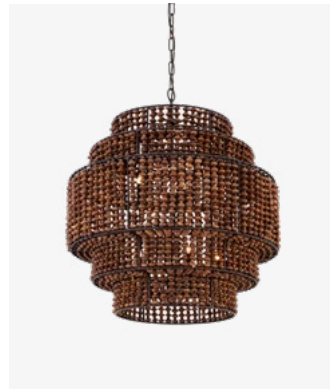
12056-732 | Pg 60



12954-860 | Pg 64



12955-860 | Pg 64



12959-860 | Pg 64



17115-860 | Pg 66



17116-860 | Pg 66



19895-732 | Pg 68



19935-732 | Pg 70



15585-732 | Pg 72



15575-613 | Pg 74



19955-860 | Pg 76



19975-732 | Pg 78



19976-732 | Pg 78



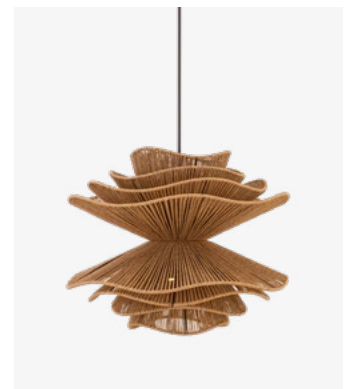
12046-868 | Pg 80



19946-732 | Pg 82



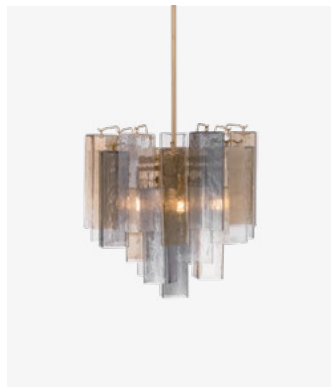
19885-732 | Pg 84



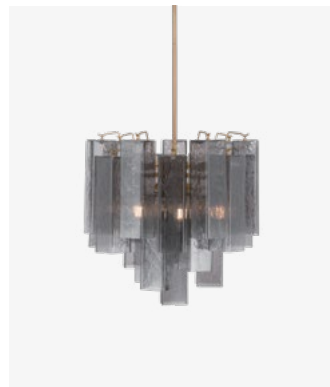
19996-860 | Pg 86



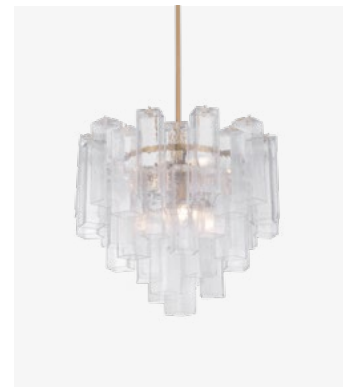
N3146-732 | Pg 88



N3146-MX-732 | Pg 90



N3146-GS-732 | Pg 92



N3148-732 | Pg 88



N3148-MX-732 | Pg 90



N3148-GS-732 | Pg 92



N3149-732 | Pg 88



N3149-MX-732 | Pg 90

PENDANTS



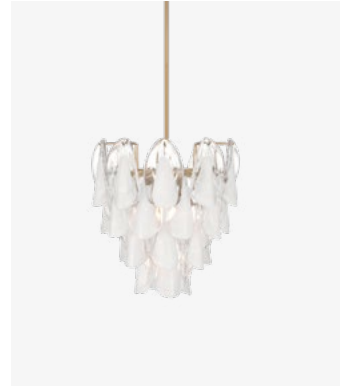
N3149-GS-732 | Pg 92



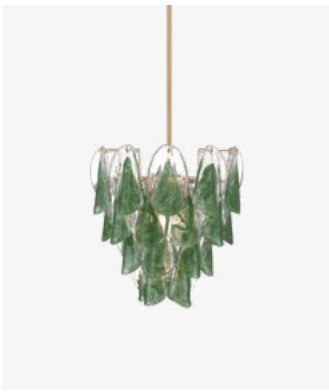
12656-732 | Pg 94



12655-732 | Pg 94



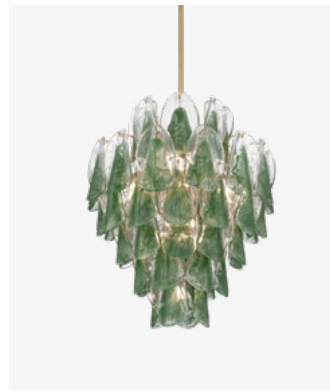
N3475-732 | Pg 96



N3475-G-732 | Pg 98



N3478-732 | Pg 96



N3478-G-732 | Pg 98



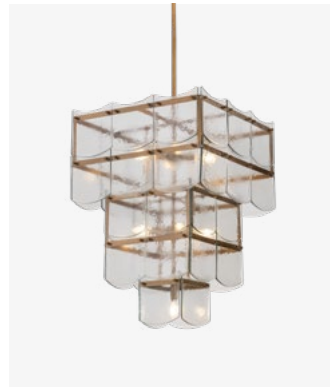
N3479-732 | Pg 96



N3479-G-732 | Pg 98



12396-732 | Pg 108



12759-732 | Pg 110



15256-732-L | Pg 112



N2227-732 | Pg 114



N2229-732 | Pg 114



N5625-732 | Pg 118



N5623-732 | Pg 118



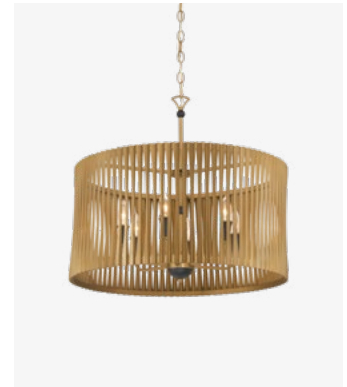
10256-732 | Pg 120



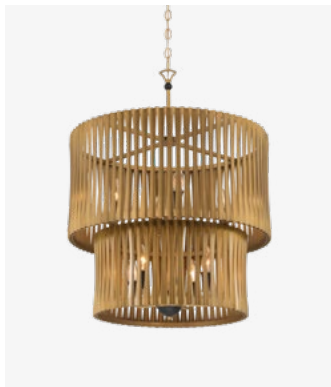
2066-732 | Pg 124



10426-732 | Pg 126



16026-877 | Pg 130



16028-877 | Pg 130



10315-855 | Pg 132



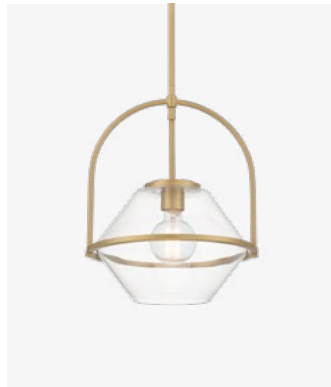
13105-855 | Pg 134



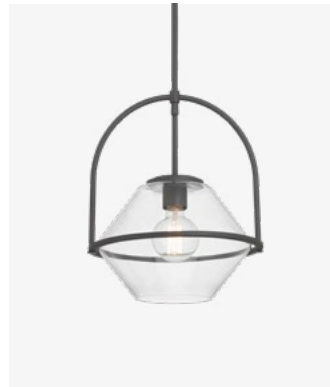
13105-796 | Pg 134



11895-84 | Pg 138



11895-732 | Pg 138



11895-899 | Pg 138



12108-855 | Pg 168



12415-860 | Pg 172



12416-860 | Pg 172



12418-860 | Pg 172



12419-860 | Pg 172

PENDANTS



12455-860 | Pg 174



19925-855 | Pg 176



19914-789 | Pg 178



19915-789 | Pg 178



18312-880 | Pg 180



18314-880 | Pg 180



19965-732 | Pg 182



17649-899 | Pg 186



1916-732 | Pg 190

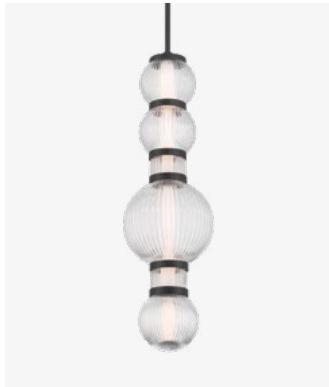


1916-899 | Pg 190

MINI PENDANTS



15030-732-L | Pg 32



15030-899-L | Pg 32



15036-732-L | Pg 32



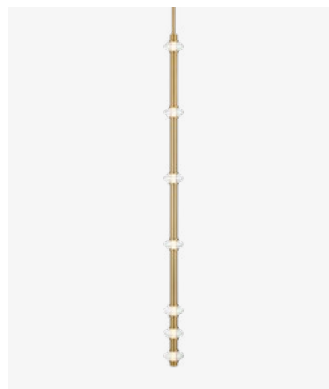
15036-899-L | Pg 32



15035-732-L | Pg 32



15035-899-L | Pg 32



5649-732-L | Pg 52



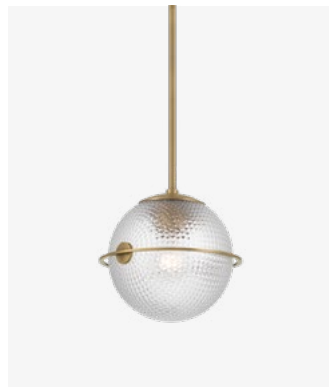
5649-899-L | Pg 52



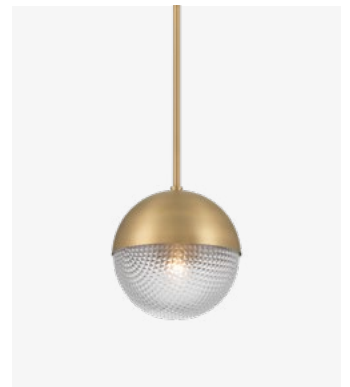
16065-732 | Pg 58



15565-732 | Pg 72



10125-732 | Pg 136



10126-732 | Pg 136



13125-84 | Pg 140



13125-732 | Pg 140



13125-899 | Pg 140



5686-84 | Pg 162

CHANDELIERS



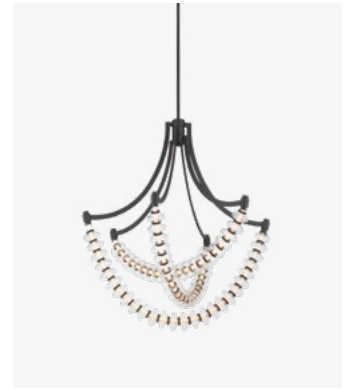
12079-732 | Pg 10



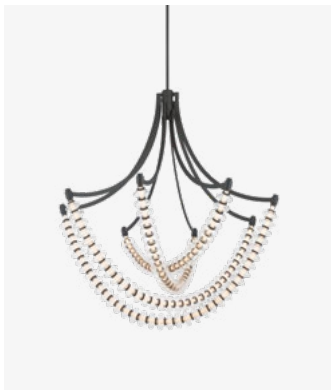
12505-732 | Pg 12



2525-732 | Pg 28



5646-899-L | Pg 52



5647-899-L | Pg 52



5648-899-L | Pg 52



14265-732 | Pg 62



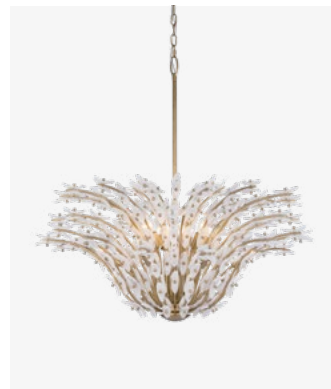
14266-732 | Pg 62



13955-870 | Pg 100



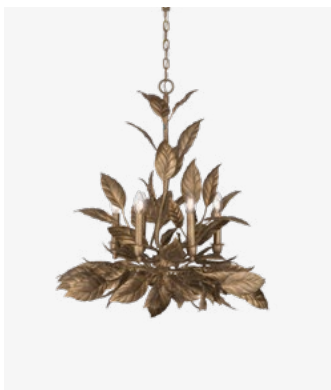
13956-870 | Pg 100



N3409-870 | Pg 102



N3428-870 | Pg 104



N3526-736 | Pg 106



N3528-736 | Pg 106



12326-876 | Pg 122



12328-876 | Pg 122



2065-732 | Pg 124



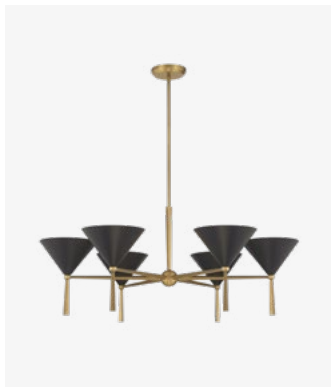
12115-732 | Pg 126



12129-732 | Pg 128



12129-899 | Pg 128



10316-855 | Pg 132



N3508-860 | Pg 166



N3509-860 | Pg 166



N3318-891 | Pg 170



N3319-891 | Pg 170



10286-860 | Pg 184



12728-796 | Pg 188

LINEAR CHANDELIERS



10387-732 | Pg 9



12507-732 | Pg 12



N3127-732 | Pg 14



N2377-732-L | Pg 30



15037-732-L | Pg 32



15037-899-L | Pg 32



10417-860-L | Pg 34



2555-855-L | Pg 36



2506-732-L | Pg 38



2506-860-L | Pg 38



16067-732 | Pg 58



12055-732 | Pg 60



N3526-736 | Pg 108



N5626-732 | Pg 118



12327-876 | Pg 122



10427-732 | Pg 126



16027-877 | Pg 130



N3507-860 | Pg 166



12105-855 | Pg 168



12727-796 | Pg 189

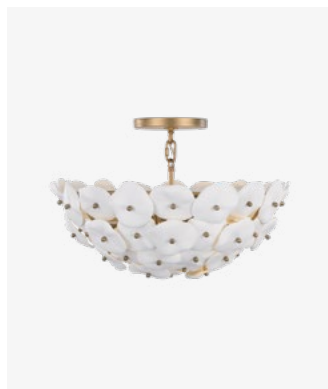
SEMI FLUSH MOUNT



12077-732 | Pg 10



12079-732 | Pg 10



N1823-732 | Pg 26



2036-732-L | Pg 40



12054-732 | Pg 60



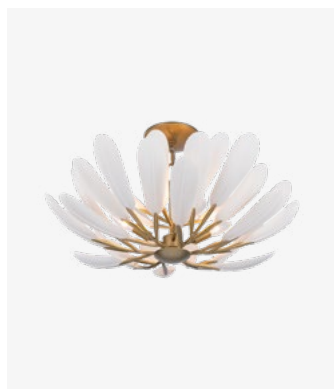
12654-732 | Pg 94



13954-870 | Pg 100



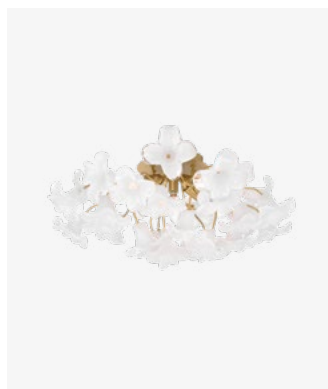
N3406-870 | Pg 102



N3424-870 | Pg 104



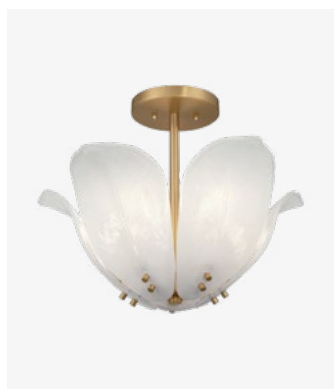
12396-732 | Pg 108



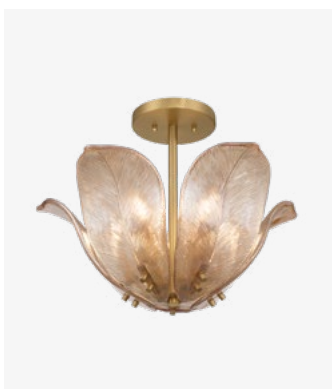
N2225-732 | Pg 114



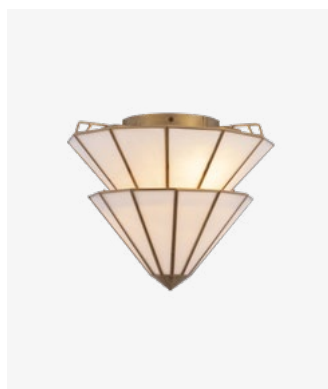
N2224-732 | Pg 114



N2214-732 | Pg 116



N2214-A-732 | Pg 116



N5624-732 | Pg 118



10255-732 | Pg 120



2066-732 | Pg 124



12625-84 | Pg 142



12625-732 | Pg 142



12625-84 | Pg 142



14086-84 | Pg 144



14086-732 | Pg 144



14086-899 | Pg 144



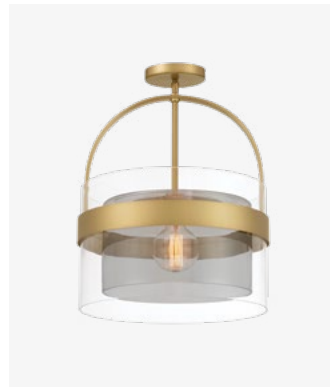
N2352-732 | Pg 146



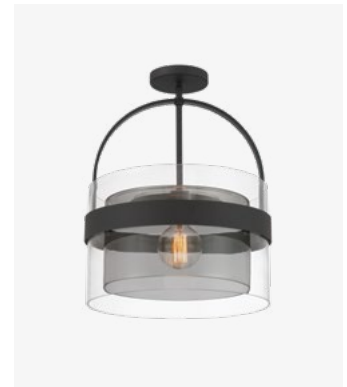
N2354-732 | Pg 146



12417-860 | Pg 172

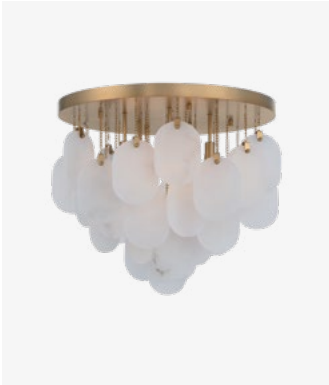


1916-732 | Pg 190



1916-899 | Pg 190

FLUSH MOUNT



N3675-732 | Pg 24



5645-899-L | Pg 53



18766-860 | Pg 54



N3145-732 | Pg 89



N3145-MX-732 | Pg 91



N3145-GS-732 | Pg 93



N3476-732 | Pg 97



N3476-G-732 | Pg 99



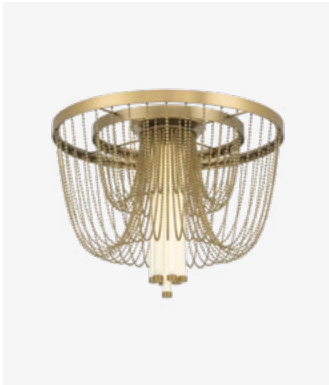
N3477-732 | Pg 97



N3477-G-732 | Pg 99



N3525-736 | Pg 107



15255-732-L | Pg 112



16023-877 | Pg 131



14226-84-L | Pg 148



14226-732-L | Pg 148



14226-868-L | Pg 148



14225-890-L | Pg 150



14225-876-L | Pg 150



14225-855-L | Pg 150



3939-879 | Pg 152



3939-732 | Pg 152



3939-876 | Pg 152



18635-887-L | Pg 154



18635-876-L | Pg 154



18635-798-L | Pg 154



18636-887-L | Pg 154



18636-876-L | Pg 154



18636-798-L | Pg 154

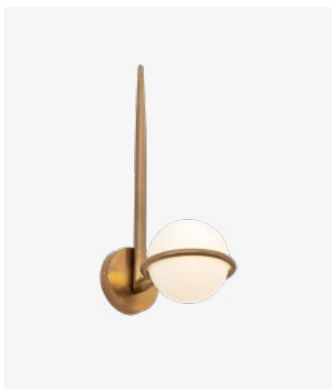


17647-899 | Pg 186

WALL SCONCES



10380-732 | Pg 8



12501-732 | Pg 12



N3121-732 | Pg 14



N2241-732 | Pg 17



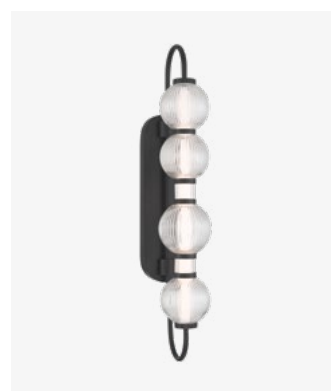
N2241-BR-732 | Pg 19



N2241-GR-732 | Pg 21



15032-732-L | Pg 32



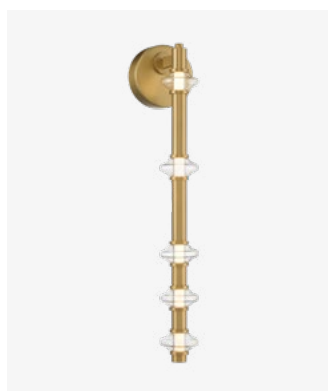
15032-899-L | Pg 32



10413-860-L | Pg 34



2552-855 | Pg 36



5640-732-L | Pg 52



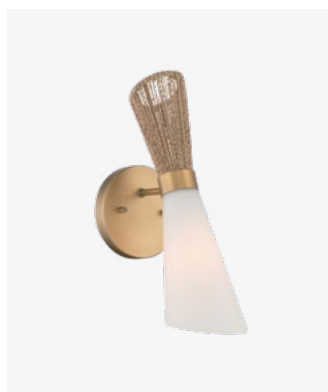
5640-899-L | Pg 52



16061-732 | Pg 58



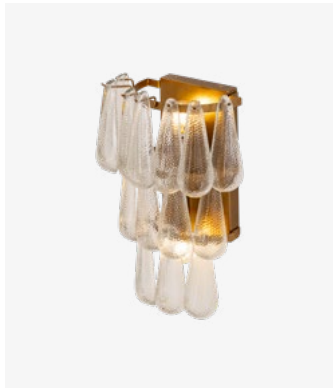
12052-732 | Pg 60



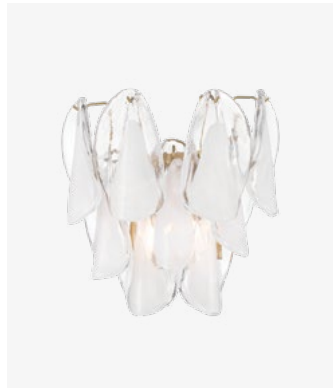
14261-732 | Pg 62



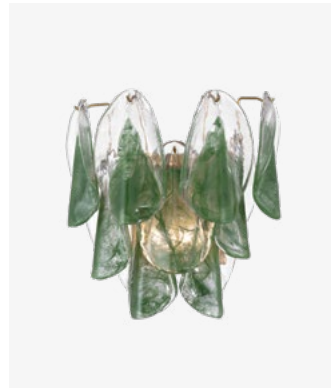
Orchid | Pg 64



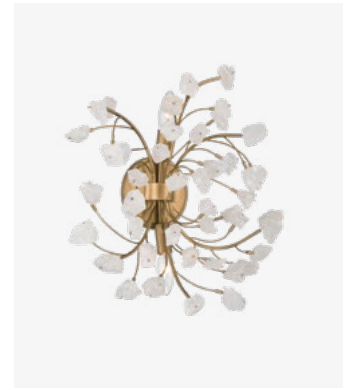
12653-732 | Pg 94



N3472-732 | Pg 96



N3472-G-732 | Pg 98



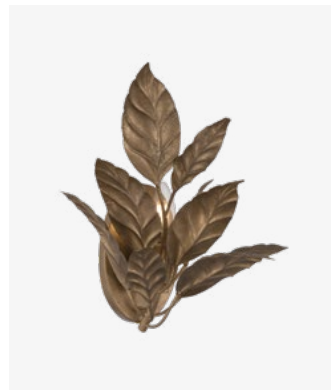
13952-870 | Pg 100



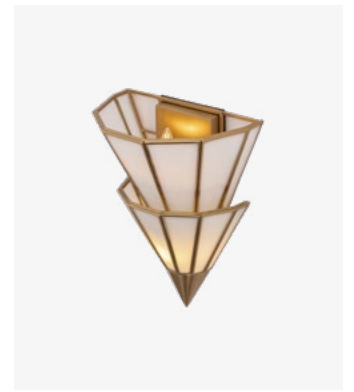
N3402-870 | Pg 102



N3421-870 | Pg 104



N3522-736 | Pg 107



N5621-732 | Pg 118



10251-732 | Pg 120



12321-876 | Pg 122



10421-732 | Pg 126



16020-877 | Pg 130

BATH SCONCES



10381-732 | Pg 8



2031-732-L | Pg 40



12431-84 | Pg 42



12431-732 | Pg 42



12431-899 | Pg 42



2061-732 | Pg 124



10311-855 | Pg 132



10271-876 | Pg 156



12011-84 | Pg 158



12011-732 | Pg 158



12011-899 | Pg 158



14371-84 | Pg 160



14371-732 | Pg 160



14371-899 | Pg 160



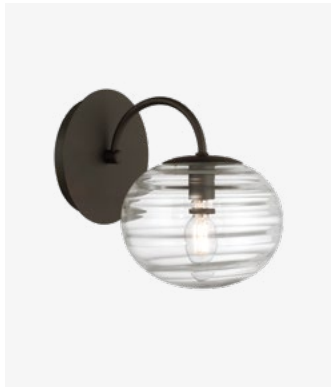
5681-84 | Pg 162



5680-84 | Pg 162



2571-899 | Pg 164



N3501-860 | Pg 167



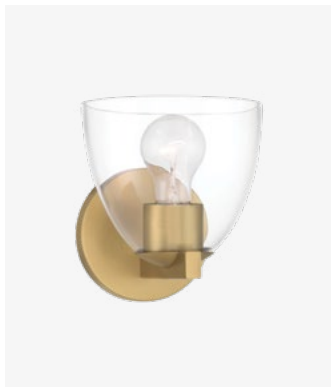
10281-860 | Pg 184



17641-899 | Pg 186



12481-84 | Pg 188



12481-732 | Pg 188



12481-796 | Pg 188



1911-732 | Pg 190



1911-899 | Pg 190

VANITY



2033-732-L | Pg 40



12432-84 | Pg 42



12432-732 | Pg 42



12432-899 | Pg 42



12433-84 | Pg 42



12433-732 | Pg 42



12433-899 | Pg 42



5642-732-L | Pg 53



5642-899-L | Pg 53



10252-732 | Pg 120



10253-732 | Pg 121



12322-876 | Pg 123



12323-876 | Pg 122



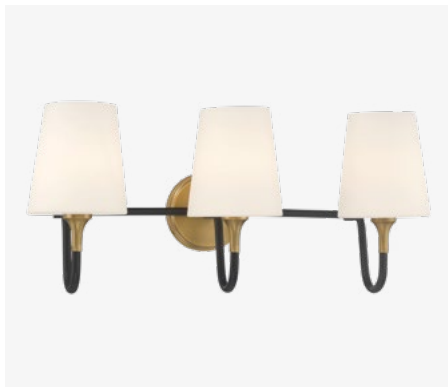
2062-732 | Pg 124



2063-732 | Pg 124



10272-876 | Pg 156



10273-876 | Pg 156



12012-84 | Pg 158



12012-732 | Pg 158



12012-899 | Pg 158



12013-84 | Pg 158



12013-732 | Pg 158



12013-899 | Pg 158



14372-84 | Pg 160

VANITY



14372-732 | Pg 160



14372-899 | Pg 160



14373-84 | Pg 160



14373-732 | Pg 160



14373-899 | Pg 160



5682-84 | Pg 162



5683-84 | Pg 162



5684-84 | Pg 162



2572-899 | Pg 164



2573-899 | Pg 164



17642-899 | Pg 186



17643-899 | Pg 186



12482-84 | Pg 188



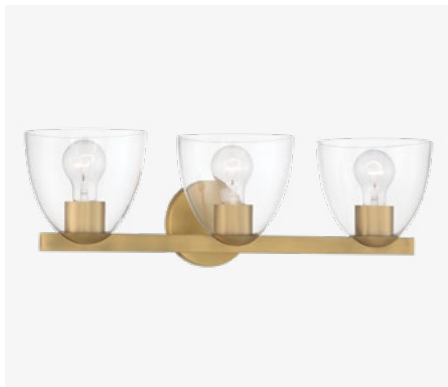
12482-732 | Pg 188



12482-796 | Pg 188



12483-84 | Pg 188



12483-732 | Pg 188



12483-796 | Pg 188



1912-732 | Pg 190



1912-899 | Pg 190



1913-732 | Pg 190



1913-899 | Pg 190

BATH BARS



2921-732-L | Pg 56



2921-899-L | Pg 56



2922-732-L | Pg 56



2922-899-L | Pg 56



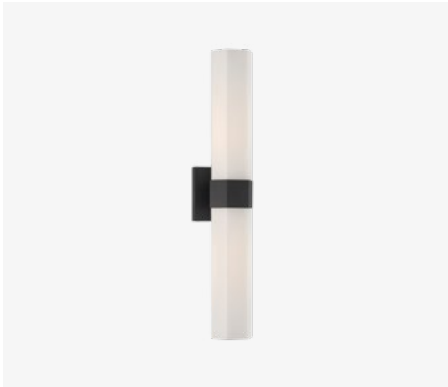
2923-732-L | Pg 56



2923-899-L | Pg 56



12122-732 | Pg 128



12122-899 | Pg 128



18752-876-L | Pg 155



18752-798-L | Pg 155



18752-887-L | Pg 155



OUTDOOR



78603-899 | Pg 192



78602-899 | Pg 192



78201-899 | Pg 194



78202-899 | Pg 194



78206-899 | Pg 194



79501-877-L | Pg 196



79500-877-L | Pg 196



79300-66-L | Pg 198



79301-66-L | Pg 198



79200-66-L | Pg 200



79201-66-L | Pg 200



78401-886 | Pg 202



78402-886 | Pg 202



78501-886 | Pg 204



78503-886 | Pg 204



78502-886 | Pg 204



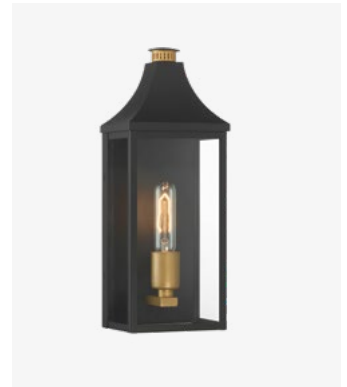
78100-886 | Pg 206



78102-886 | Pg 206



78103-886 | Pg 206



78301-734 | Pg 208



78302-734 | Pg 208



78306-734 | Pg 208



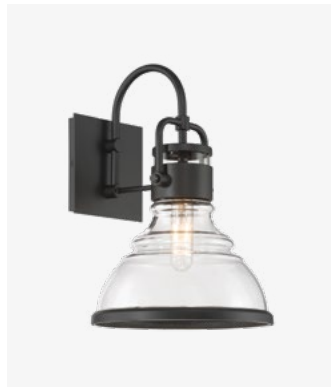
78304-734 | Pg 208



79102-66 | Pg 210



79103-66 | Pg 210



78700-899 | Pg 212

INDEX

1911-732	190	10311-855	132	12433-899	42
1911-899	190	10315-855	132	12455-860	174
1912-732	190	10316-855	132	12481-84	188
1912-899	190	10380-732	8	12481-732	188
1913-732	190	10381-732	8	12481-796	188
1913-899	190	10385-732	8	12482-84	188
1916-732	190	10386-732	8	12482-732	188
1916-899	190	10387-732	9	12482-796	188
2031-732-L	40	10388-876	8	12483-84	188
2033-732-L	40	10413-860-L	34	12483-732	188
2036-732-L	40	10416-860-L	34	12483-796	188
2061-732	124	10417-860-	34	12501-732	12
2062-732	124	10419-860-L	34	12505-732	12
2063-732	124	10421-732	126	12507-732	12
2065-732	124	10426-732	126	12625-84	142
2066-732	124	10427-732	126	12625-732	142
2506-732-L	38	11895-84	138	12625-868	142
2506-860-L	38	11895-732	138	12653-732	94
2525-732	28	11895-899	138	12654-732	94
2526-732	28	12011-84	158	12655-732	94
2552-855	36	12011-732	158	12656-732	94
2555-855-L	36	12011-899	158	12727-796	189
2571-899	164	12012-84	158	12728-796	188
2572-899	164	12012-732	158	12759-732	110
2573-899	164	12012-899	158	12854-732	22
2921-732-L	56	12013-84	158	12855-732	22
2921-899-L	56	12013-732	158	12856-732	22
2922-732-L	56	12013-899	158	12952-860	64
2922-899-L	56	12046-868	80	12954-860	64
2923-732-L	56	12052-732	60	12955-860	64
2923-899-L	56	12054-732	60	12959-860	64
3939-732	152	12055-732	60	13105-796	134
3939-876	152	12056-732	60	13105-855	134
3939-879	152	12077-732	10	13125-84	140
5640-732-L	52	12079-732	10	13125-732	140
5640-899-L	52	12105-855	168	13125-899	140
5642-732-L	53	12108-855	168	13952-870	100
5642-899-L	53	12115-732	126	13954-870	100
5645-899-L	53	12122-732	128	13955-870	100
5646-899-L	52	12122-899	128	13956-870	100
5647-899-L	52	12129-732	128	14086-84	144
5648-899-L	52	12129-899	128	14086-732	144
5649-732-L	52	12321-876	122	14086-899	144
5649-899-L	52	12322-876	123	14225-855-L	150
5680-84	162	12323-876	122	14225-876-L	150
5681-84	162	12326-876	122	14225-890-L	150
5682-84	162	12327-876	122	14226-84-L	148
5683-84	162	12328-876	122	14226-732-L	148
5684-84	162	12396-732	108	14226-868-L	148
5686-84	162	12415-860	172	14261-732	62
10125-732	136	12416-860	172	14265-732	62
10126-732	136	12417-860	172	14266-732	62
10251-732	120	12418-860	172	14371-84	160
10252-732	120	12419-860	172	14371-732	160
10253-732	121	12431-84	42	14371-899	160
10255-732	120	12431-732	42	14372-84	160
10256-732	120	12431-899	42	14372-732	160
10271-876	156	12432-84	42	14372-899	160
10272-876	156	12432-732	42	14373-84	160
10273-876	156	12432-899	42	14373-732	160
10281-860	184	12433-84	42	14373-899	160
10286-860	184	12433-732	42	15030-732-L	32

15030-899-L	32	19986-899	50	N3146-732	88
15032-732-L	32	19996-860	86	N3146-GS-732	92
15032-899-L	32	78100-886	206	N3146-MX-732	90
15035-732-L	32	78102-886	206	N3148-732	88
15035-899-L	32	78103-886	206	N3148-GS-732	92
15036-732-L	32	78201-899	194	N3148-MX-732	90
15036-899-L	32	78202-899	194	N3149-732	88
15037-732-L	32	78206-899	194	N3149-GS-732	92
15037-899-L	32	78301-734	208	N3149-MX-732	90
15255-732-L	112	78302-734	208	N3318-891	170
15256-732-L	112	78304-734	208	N3319-891	170
15565-732	72	78306-734	208	N3402-870	102
15575-613	74	78401-886	202	N3406-870	102
15585-732	72	78402-886	202	N3409-870	102
16020-877	130	78501-877	204	N3421-870	104
16023-877	131	78502-877	204	N3424-870	104
16026-877	130	78503-877	204	N3428-870	104
16027-877	130	78602-899	192	N3472-732	96
16028-877	130	78603-899	192	N3472-G-732	98
16061-732	58	78700-899	212	N3475-732	96
16065-732	58	79102-66	210	N3475-G-732	98
16066-732	58	79103-66	210	N3476-732	97
16067-732	58	79200-66-L	200	N3476-G-732	99
17115-860	66	79201-66-L	200	N3477-732	97
17116-860	66	79300-66-L	198	N3477-G-732	99
17641-899	186	79301-66-L	198	N3478-732	96
17642-899	186	79500-877-L	196	N3478-G-732	98
17643-899	186	79501-877-L	196	N3479-732	96
17647-899	186	N1823-732	26	N3479-G-732	98
17649-899	186	N1827-732	26	N3501-860	167
18312-880	180	N1829-732	26	N3507-860	166
18314-880	180	N2214-732	116	N3508-860	166
18635-798-L	154	N2214-A-732	116	N3509-860	166
18635-876-L	154	N2224-732	114	N3522-736	107
18635-887-L	154	N2225-732	114	N3525-736	107
18636-798-L	154	N2227-732	114	N3526-736	106
18636-876-L	154	N2229-732	114	N3527-736	106
18636-887-L	154	N2241-732	17	N3528-736	106
18752-798-L	155	N2241-BR-732	19	N3675-732	24
18752-876-L	155	N2241-GR-732	21	N3676-732	24
18752-887-L	155	N2246-732	16	N3678-732	24
18766-860	54	N2246-BR-732	18	N5621-732	118
19414-84	44	N2246-GR-732	20	N5623-732	118
19414-732	44	N2248-732	16	N5624-732	118
19415-84	44	N2248-BR-732	18	N5625-732	118
19415-732	44	N2248-GR-732	20	N5626-732	118
19416-84	44	N2249-732	16		
19416-732	44	N2249-BR-732	18		
19615-732	46	N2249-GR-732	20		
19615-899	46	N2352-732	146		
19875-732	48	N2354-732	146		
19885-732	84	N2373-732-L	30		
19895-732	68	N2377-732-L	30		
19914-789	178	N2379-732-L	30		
19915-789	178	N3121-732	14		
19925-855	176	N3126-732	14		
19935-732	70	N3127-732	14		
19946-732	82	N3128-732	14		
19955-860	76	N3129-732	14		
19965-732	182	N3145-732	89		
19975-732	78	N3145-GS-732	93		
19976-732	78	N3145-MX-732	91		



M MINKA

Headquarters

1151 Bradford Circle
Corona, California 92882

Showroom

Dallas Market Center
2100 Stemmons, Suite 4103
Dallas, Texas 75207

800.221.7977 • sales@minka.com

MINKA.COM